



Abbey Road, NW8

£380 Per week

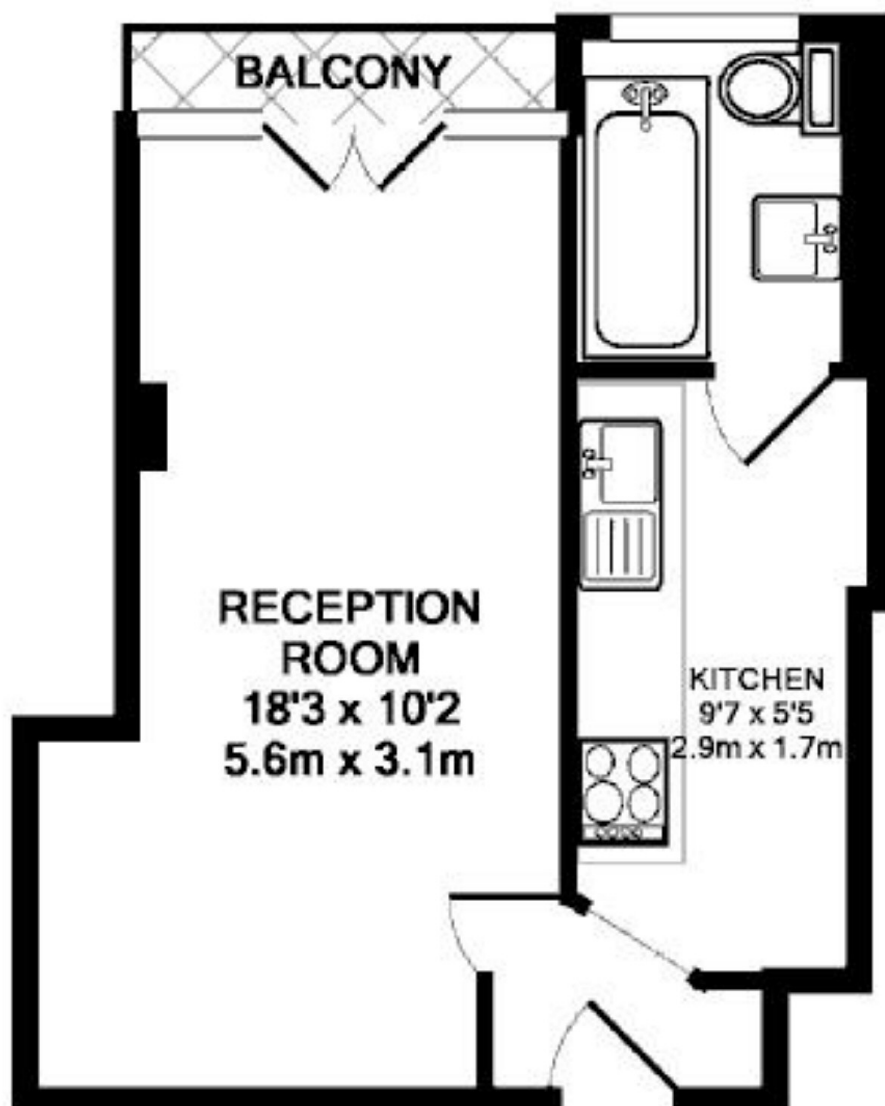
A bright studio apartment on the fifth floor (with lift) of a purpose built block close to St Johns Wood Underground station. Studio room with balcony, separate kitchen and bathroom with shower over bath. Communal hot water included within the rent.

Abbey House is located a short distance to St Johns Wood Underground station and High Street.

Features

- Studio Apartment
- Porter Service
- Communal Hot Water
- Communal Garden
- Fifth Floor Via Lift
- Balcony

Abbey Road, London, NW8



ABBHEY HOUSE, ABBHEY ROAD, LONDON NW8
TOTAL APPROX. FLOOR AREA 25.0 SQ.M. (269 SQ.FT.)

Measurements are approximate. Not to scale. Illustrative purposes only
Made with Metropix ©2007

Dexters

St. John's Wood
4-6 St Ann's Terrace
London
NW8 6PJ
Lettings
020 7483 6330

Energy Rating: E. We aim to make our particulars both accurate and reliable. However they are not guaranteed; nor do they form part of an offer or contract. If you require clarification on any points then please contact us, especially if you're traveling some distance to view. Please note that appliances and heating systems have not been tested and therefore no warranties can be given as to their good working order.

 **RICS** | Regulated
Estate Agent
and Letting Agent

dexters.co.uk