



Elm Tree Road, NW8

£500,000

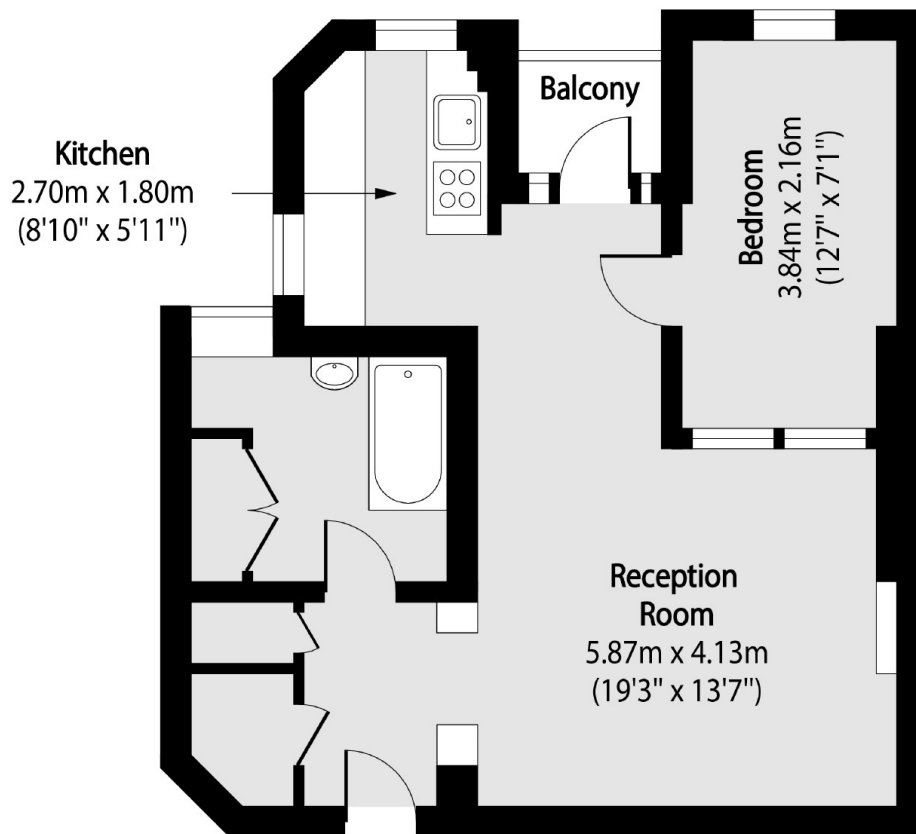
Situated on the second floor of a secure portered development is this one bedroom apartment with private balcony. The property offers scope for modernisation and benefits from having a large reception, separate kitchen, communal garden and lift access.

Elm Tree Court is located on a quiet residential street close to Lords Cricket Ground, Regents Park and St Johns Wood High Street.

Features

- Chain Free
- Portered Development
- Communal Garden
- Lift Access
- Private Balcony
- Separate Kitchen

Elm Tree Road,
London, NW8



Total area (approx): 44.70 sq m (481 sq. ft)

Balcony total area (approx): 1.54 sq m (17 sq. ft)