



Whittlebury Mews West, NW1

£1,875,000

A modern four bedroom, four bathroom house arranged over four floors with a private terrace and off-street parking. This property is being offered with a long lease.

Whittlebury Mews is located a short distance to the open green spaces of Primrose Hill and a large range of local shops, cafés and restaurants on Regent Park Road.

Features

- Four Bedroom House
- Four Bathrooms
- Arranged Over Four Floors
- Secure Parking for 3 Cars
- Excellent Location
- Private Terrace



Whittlebury Mews West, NW1

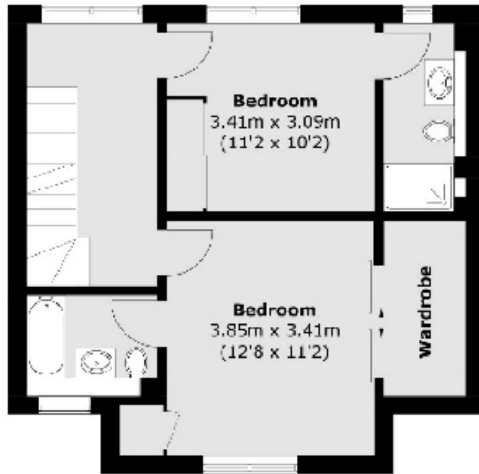
A stunning home, tucked away in the heart of Primrose Hill. This property features four bedrooms and four bathrooms, three of which are en suite, along with a separate study.

The ground floor features a generous reception area, while the lower level offers an additional reception room with an eat-in kitchen.

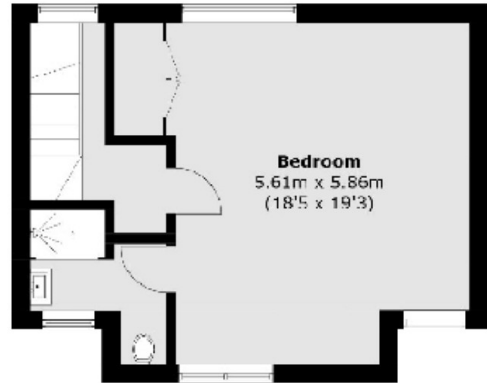
Additional highlights include a utility room, secure underground parking, premium wood flooring and a private internal courtyard.



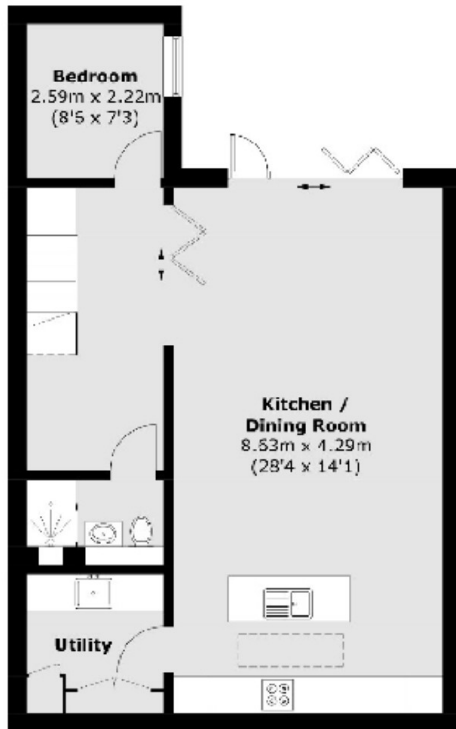
Whittlebury Mews West, London, NW1



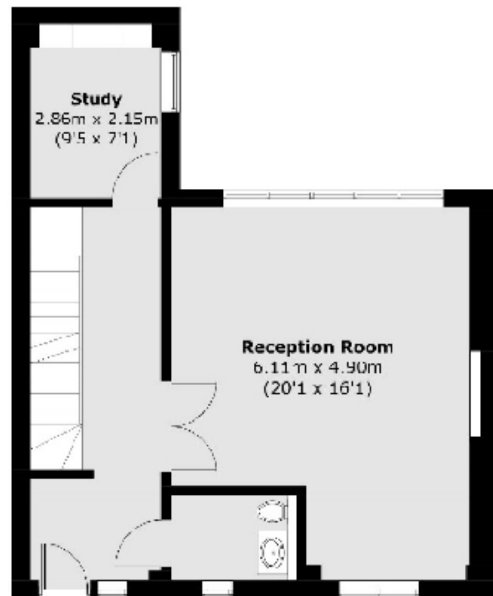
First Floor



Second Floor



Lower Ground Floor



Ground Floor

Total area (approx.): 199.7 sq. m (2,149.5 sq. ft)