



## Carlton Hill, NW8

£807 Per week

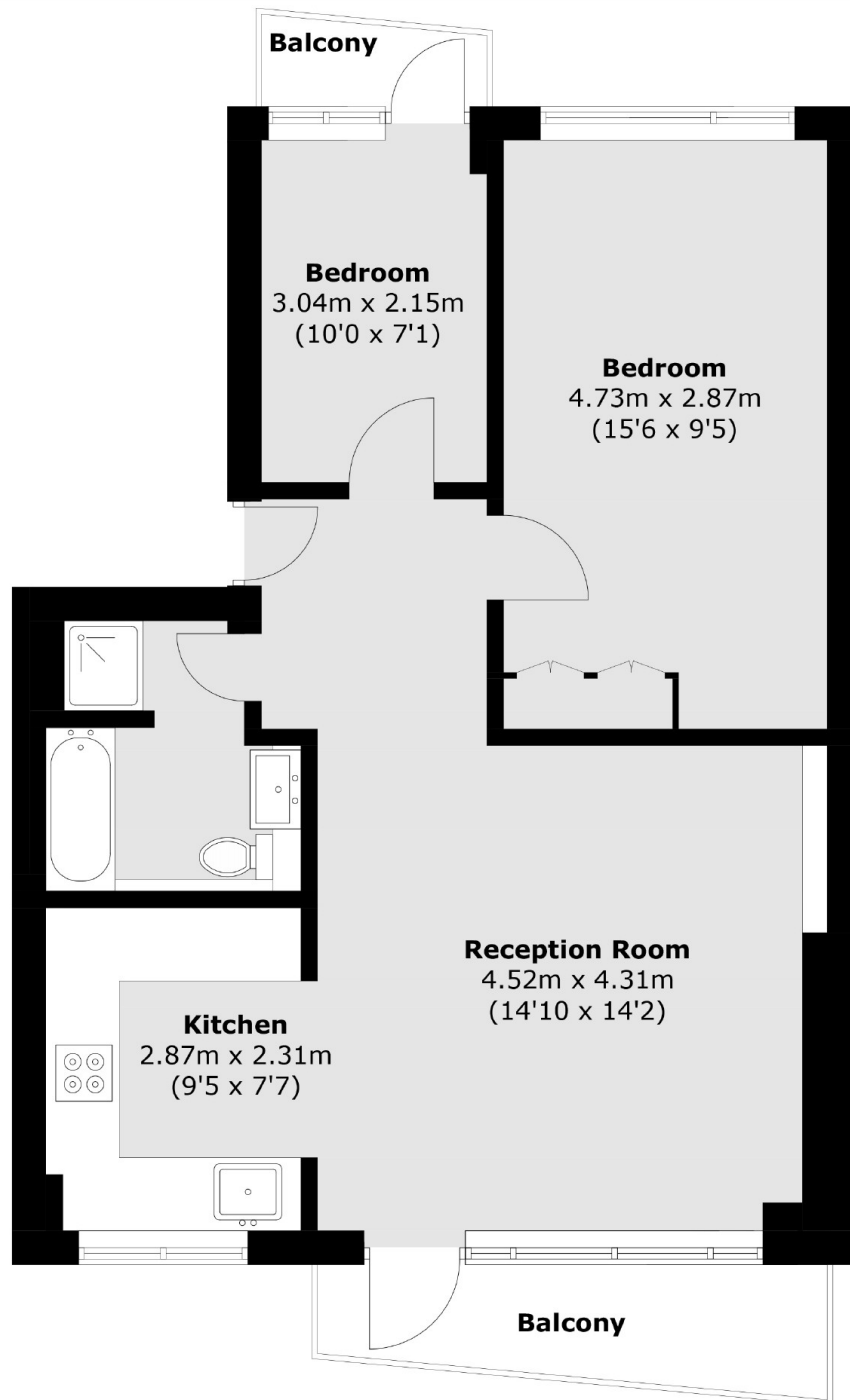
A spacious two double bedroom with two balconies on a highly sought after road. Bright reception room, separate kitchen, two double bedrooms and a modern bathroom.

Carlton Hill is located between Abbey Road and Loudoun Road giving residents great access to local shops / cafés and also a short distance to South Hampstead Overground station (one stop to Euston, London) and St Johns Wood underground station.

### Features

- Two Double Bedrooms
- One Bathroom
- Separate Kitchen
- Furnished
- Two Balconies

# Carlton Hill, London, NW8



Total area (approx.): 59.2 sq. m (637.2 sq. ft)  
Balcony area: 5.9 sq. m (63.5 sq. ft)

## Dexters

St. John's Wood  
4-6 St Ann's Terrace  
London  
NW8 6PJ  
Lettings  
020 7483 6330

Energy Rating: C. We aim to make our particulars both accurate and reliable. However they are not guaranteed; nor do they form part of an offer or contract. If you require clarification on any points then please contact us, especially if you're traveling some distance to view. Please note that appliances and heating systems have not been tested and therefore no warranties can be given as to their good working order.

 **RICS** | Regulated  
Estate Agent  
and Letting Agent

[dexters.co.uk](http://dexters.co.uk)