



## St. Johns Wood Road, NW8

### £770,000

A newly refurbished lateral two bedroom apartment located on the second floor of this charming period house ideally located opposite St John's Wood's famous Hamilton Terrace and within walking distance to Lords Cricket Ground.

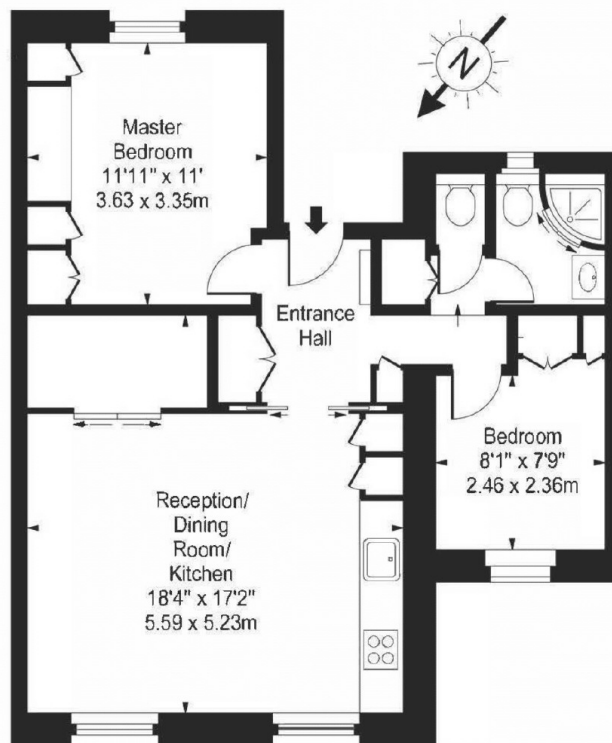
St John's Wood Road is a highly desirable part of St John's Wood with Regent's Park a short walk away. The area is further served by St John's Wood High Street renowned for its shops, fashion boutiques and restaurants and St John's Wood tube station (Jubilee Line).

### Features

Lateral Apartment  
Second Floor  
Two Bedrooms  
Study Area  
Period Conversion  
Prime Location

# St. Johns Wood Road, London, NW8

## St. Johns Wood Road, NW8



Second Floor

Approx Gross Internal Area **653 Sq Ft - 60.5 Sq M**

For Illustration Purposes Only - Not To Scale  
[www.goldlens.co.uk](http://www.goldlens.co.uk)