



Carlton Hill, NW8

£800,000

This charming maisonette is nestled within a tranquil gated residential area offering picturesque views of sought after Hamilton Terrace. The property is in pristine condition, featuring a newly renovated kitchen/breakfast room, a spacious reception room with a bay window, three bedrooms, and a family bathroom.

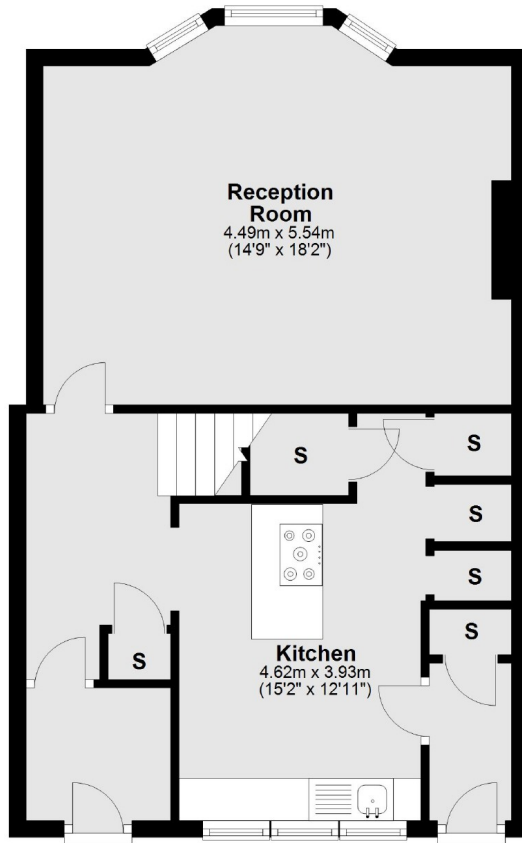
Bradby House sits at the crossroads of Carlton Hill and Hamilton Terrace, conveniently positioned less than half a mile away from Maida Vale underground station on the Bakerloo line.

Features

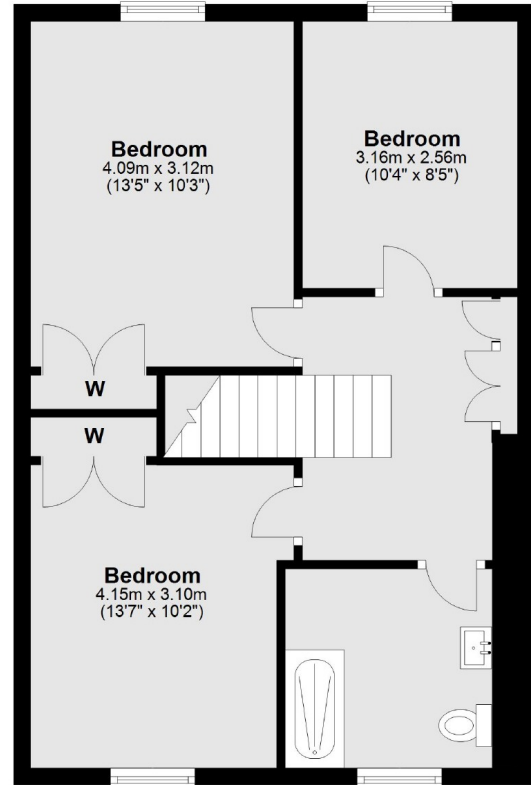
- Maisonette
- Great Condition
- Private Entrance
- Communal Gardens
- Gated Residential Development
- Off-Street Parking

Carlton Hill, London, NW8

Ground Floor



First Floor



Total area: approx. 101.8 sq. metres (1095.4 sq. feet)