



## Park Road, NW8

### £7,950,000

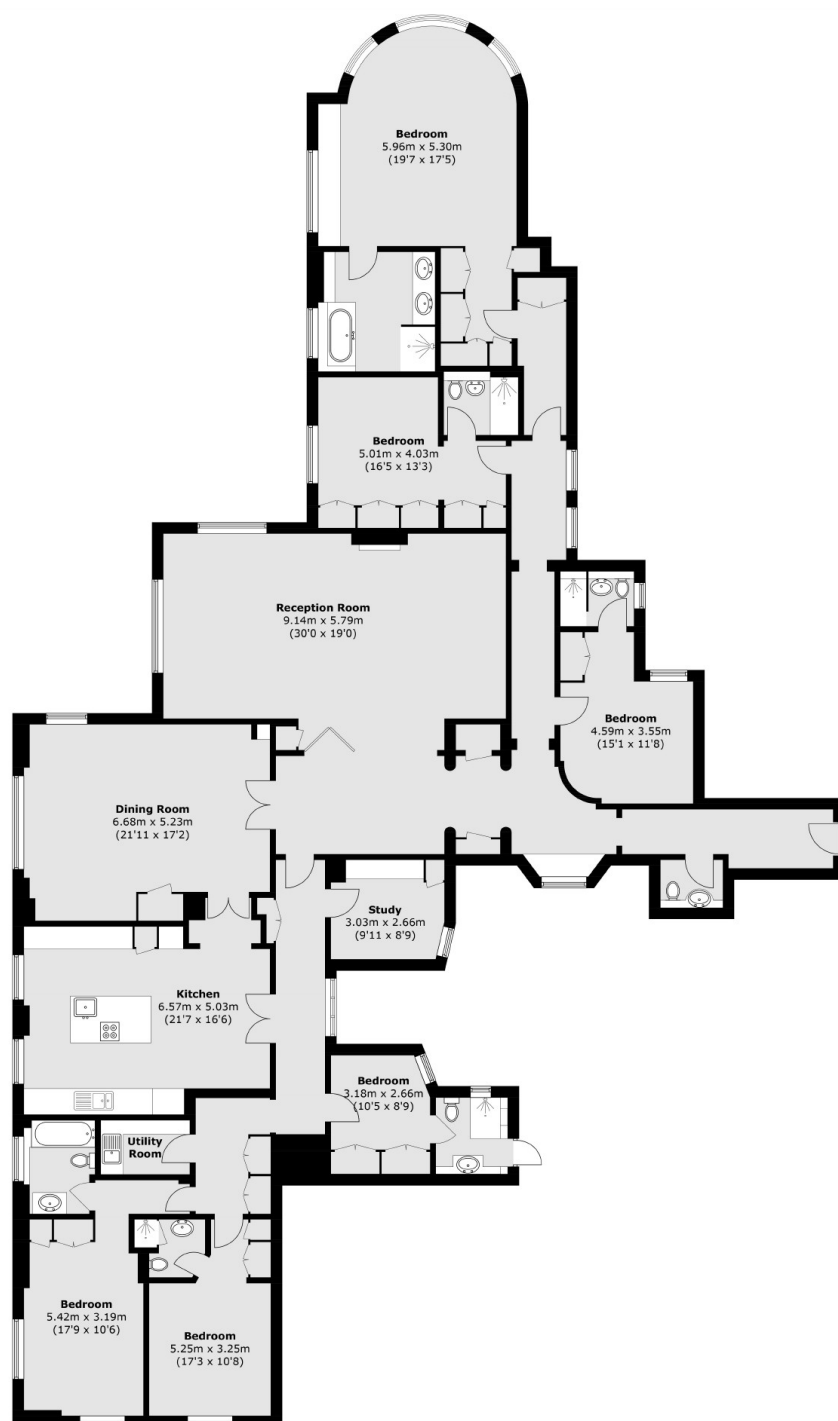
An impeccably designed lateral apartment situated on the fourth floor of a highly esteemed apartment building in St. John's Wood. This residence offers access to a 24-hour porter service and elevators serving all floors.

Conveniently positioned close to Regents Park, and just a short walk from Baker Street and Marylebone High Street, both renowned for their diverse dining options and boutique shops.

### Features

- Chain Free
- Large Lateral Apartment
- Adjacent to Regents Park
- 24 Hour Porterage & Lift Access
- Fourth Floor
- High Specification Finish
- Communal Gardens

# Park Road, London, NW8



Total area (approx.): 344.9 sq. m (3,712.5 sq. ft)

## Dexters

St. John's Wood  
4-6 St Ann's Terrace  
London  
NW8 6PJ  
Sales  
020 7483 6300

Energy Rating: C. We aim to make our particulars both accurate and reliable. However they are not guaranteed; nor do they form part of an offer or contract. If you require clarification on any points then please contact us, especially if you're traveling some distance to view. Please note that appliances and heating systems have not been tested and therefore no warranties can be given as to their good working order.

 **RICS** | Regulated  
Estate Agent  
and Letting Agent

[dexters.co.uk](https://www.dexters.co.uk)