

Grove End Road, NW8

£625,000

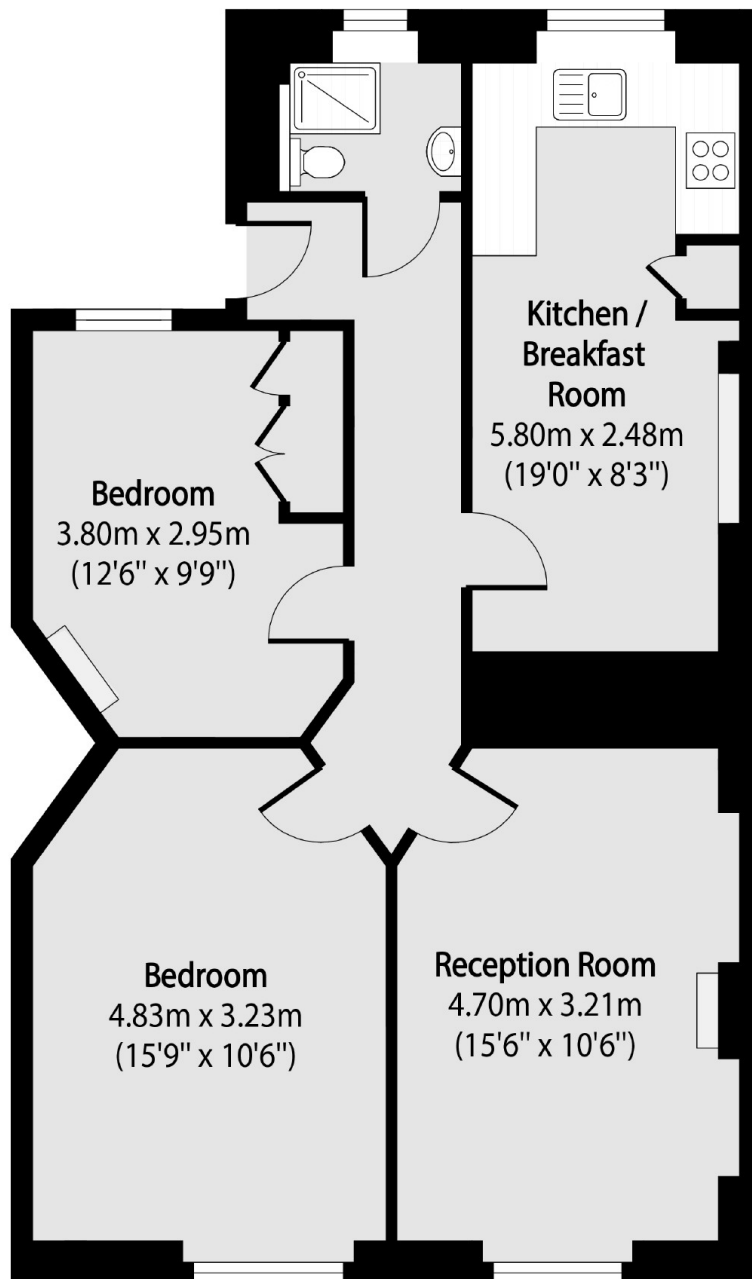
A spacious two bedroom apartment located within this portered purpose built block on Grove End Road. The property is presented in good decorative condition throughout and has the use of delightful communal gardens.

Grove End Road is located within walking distance of Maida Vale station (Bakerloo Line) and St. John's Wood station (Jubilee Line), as well as several bus links and shops that are located on nearby high streets. In close proximity of several schools and St John & St Elizabeth Hospital.

Features

- Two Bedrooms
- Porter
- Communal Gardens
- Family Bathroom
- Fitted Kitchen
- Great Location

Grove End Road, London, NW8



Total area (approx): 66.71 sq m (718 sq. ft)