



St. Johns Wood Road, NW8

£2,250 Per week

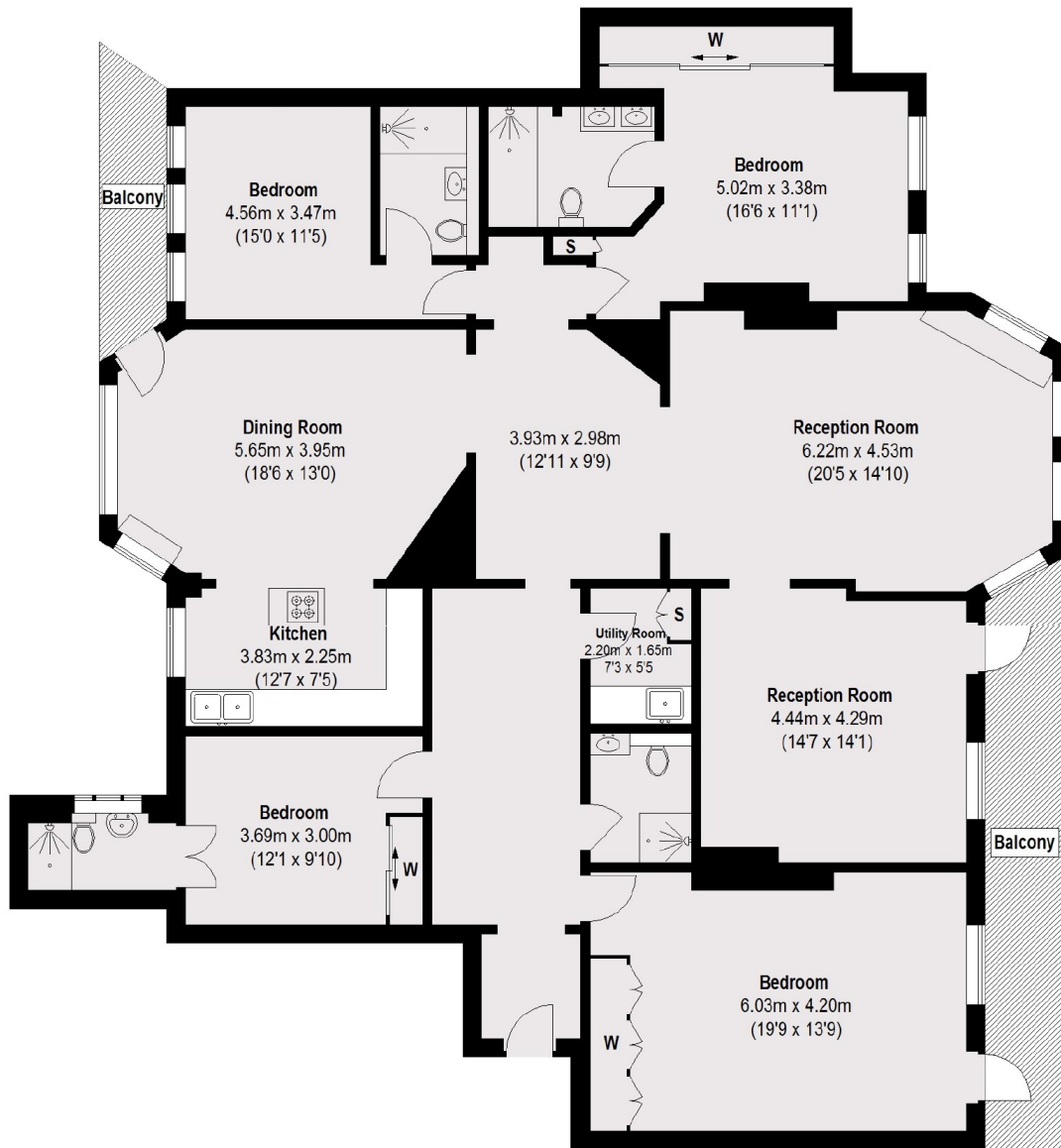
A modern four double bedroom, four bathroom apartment on the fourth floor of a 24 hour portered block in St John's Wood.

St John's Wood Court is located opposite Lords Cricket Ground, a short distance to local shops, cafés and restaurants in Little Venice and the open spaces of Regent's Park.

Features

- Four Double Bedrooms
- Four Bathrooms
- Spacious Reception Room
- Fourth Floor
- Communal Heating and Water
- 24 Hour Porter

St. Johns Wood Road, London, NW8



Fourth Floor

Total area (approx.): 206.08 sq. m (2218 sq. ft)