



Queens Grove, NW8

£669 Per week

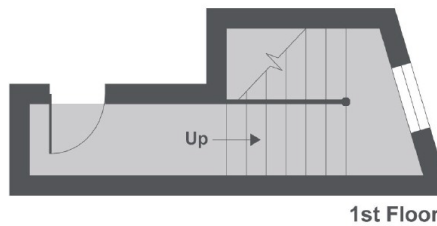
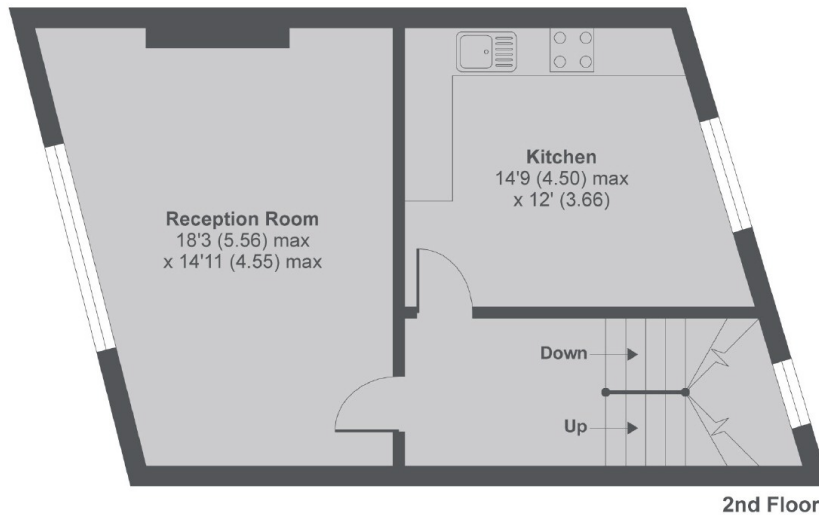
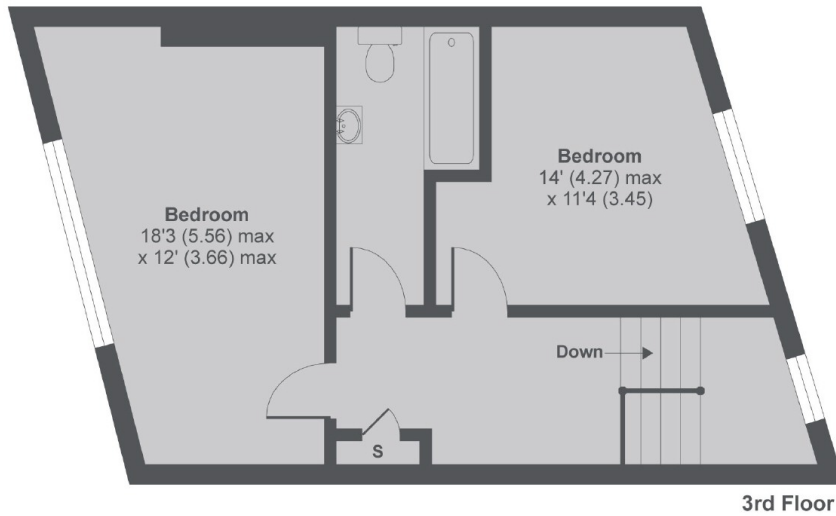
A bright 2 bedroom period conversion, conveniently situated within walking distance of local amenities and St John's Wood Underground Station (Jubilee Line).

Queen's Grove is located just behind St John's Wood Underground Station and close to all local shops on the High Street.

Features

Two Double Bedrooms
South Facing Apartment
Large separate Kitchen
Duplex

Queens Grove, London, NW8



Queens Grove NW8

MAIN HOUSE APPROX FLOOR AREA 1073 SQ.FT 99.6 SQ.M

Copyright nichecom.co.uk 2016 Produced for Dexters REF : 130252

Dexters

St. John's Wood
4-6 St Ann's Terrace
London
NW8 6PJ
Lettings
020 7483 6330

Energy Rating: . We aim to make our particulars both accurate and reliable. However they are not guaranteed; nor do they form part of an offer or contract. If you require clarification on any points then please contact us, especially if you're traveling some distance to view. Please note that appliances and heating systems have not been tested and therefore no warranties can be given as to their good working order.

 **RICS** Regulated
Estate Agent
and Letting Agent

dexters.co.uk