



Northwick Terrace, NW8

£588 Per week

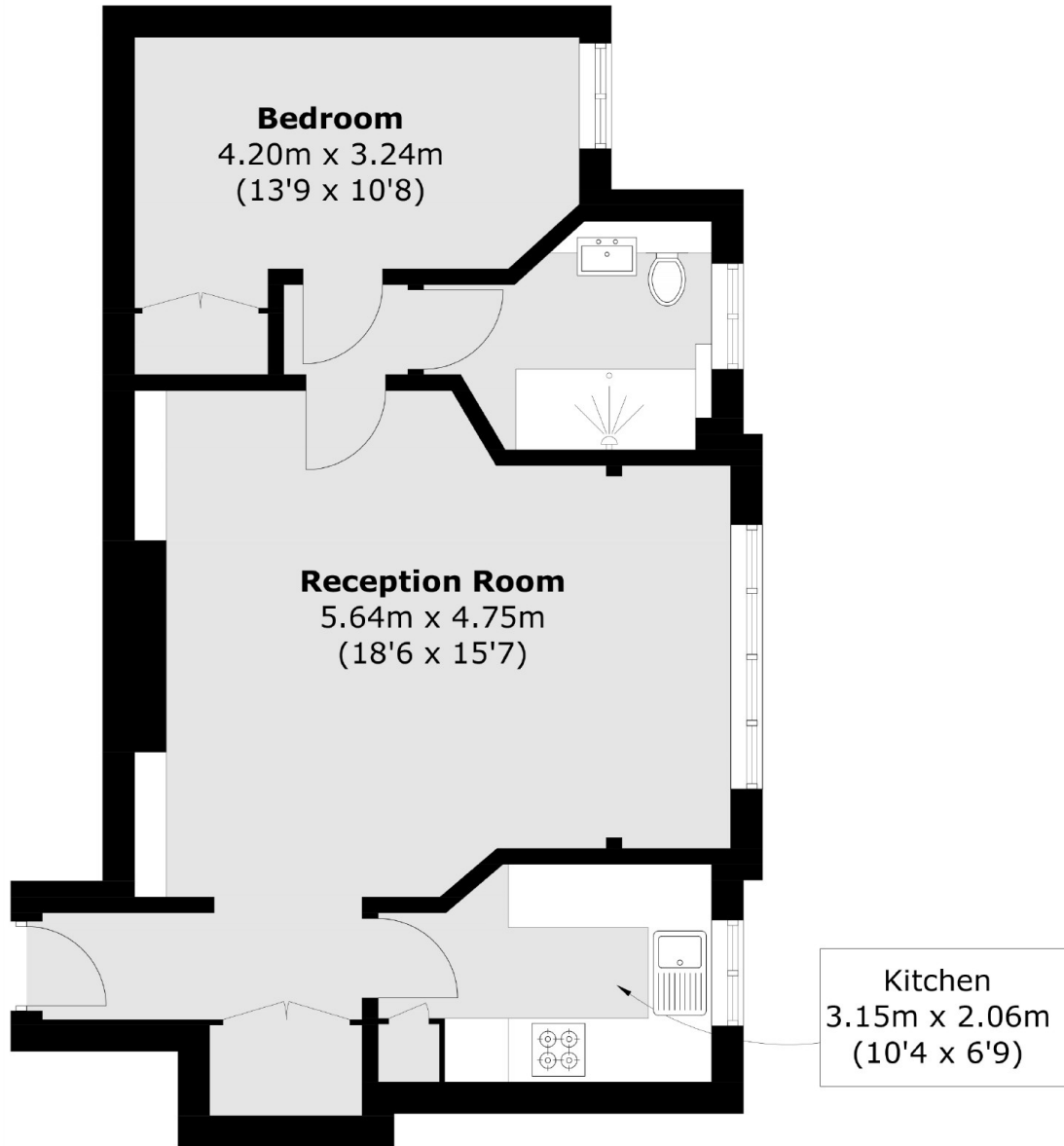
A very spacious one double bedroom apartment refurbished to a high standard. The property benefits from a separate kitchen and communal heating and hot water included within the rent. Ideal for a couple or a single professional.

Clifton Court is located close to Maida Vale and St Johns Wood Station and Lords Cricket Ground

Features

- One Double Bedroom
- Separate Kitchen
- Communal Heating and Hot Water
- Furnished

Northwick Terrace,
London, NW8



Total area (approx.): 53.4 sq. m (574.8 sq. ft)