



Northwick Terrace, NW8

£600 Per week

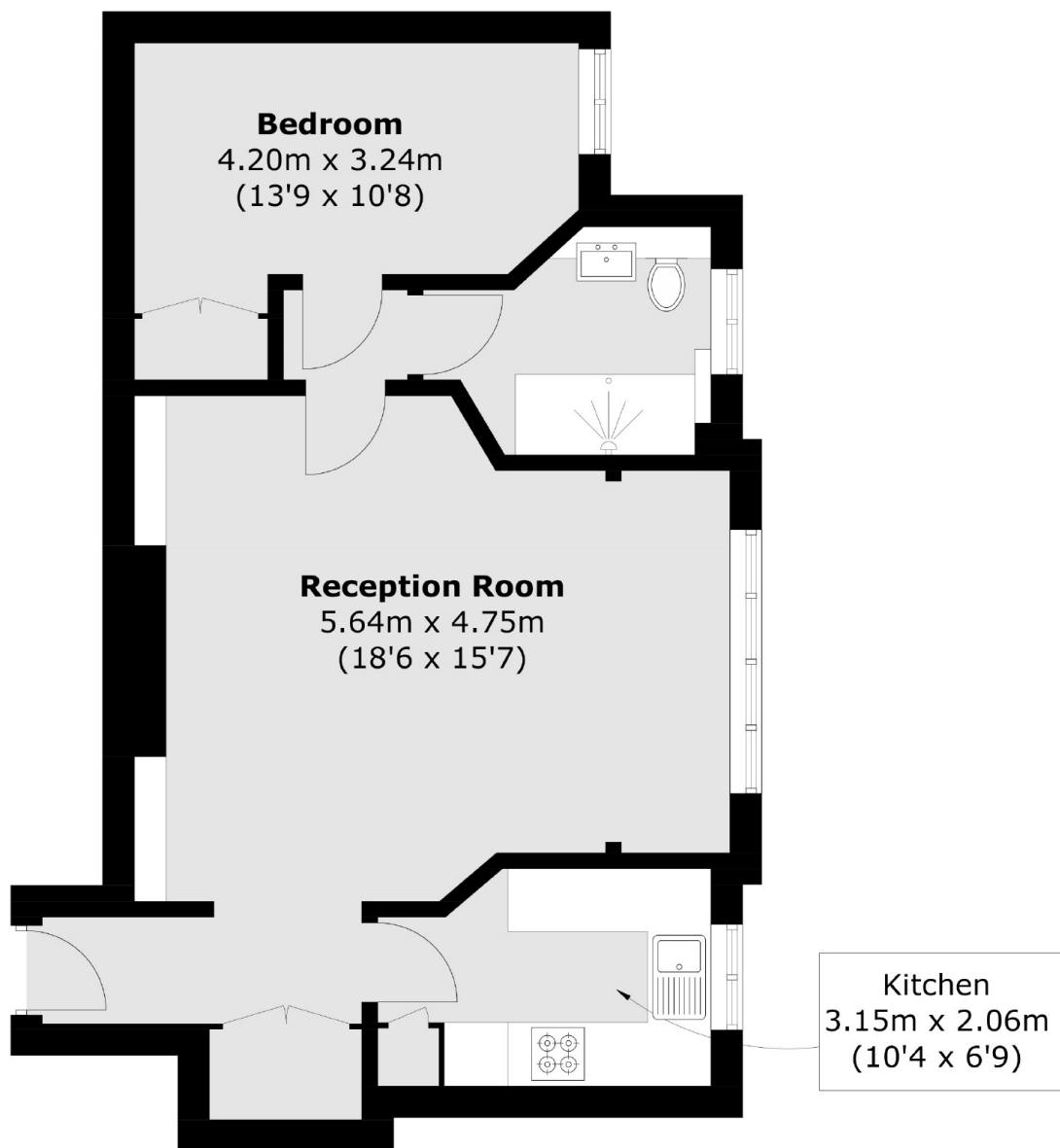
A very spacious one double bedroom apartment refurbished to a high standard. The property benefits from a separate kitchen and communal heating and hot water included within the rent. Ideal for a couple or a single professional.

Clifton Court is located close to Maida Vale and St Johns Wood Station and Lords Cricket Ground

Features

One Double Bedroom
Separate Kitchen
Communal Heating and Hot Water
Furnished

Northwick Terrace,
London, NW8



Total area (approx.): 53.4 sq. m (574.8 sq. ft)