



Whittlebury Mews West, NW1

£1,846 Per week

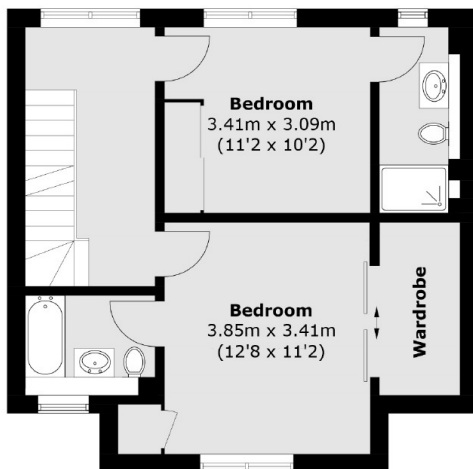
A modern four bedroom plus study, four bathroom house arranged over four floors with a private terrace and off street parking.

Whittlebury Mews is located a short distance to the open green spaces of Primrose Hill and a large range of local shops, cafés and restaurants on Regent Park Road.

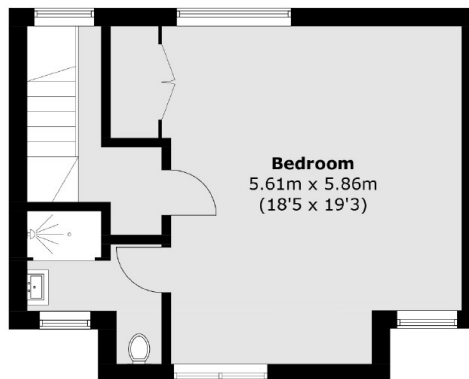
Features

- Four Bedroom House
- Four Bathrooms
- Arranged Over Four Floors
- Secure Parking
- Excellent Location
- Private Terrace

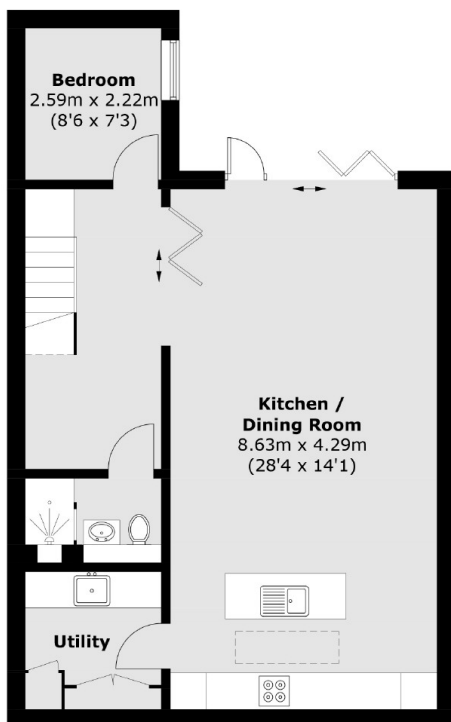
Whittlebury Mews West, London, NW1



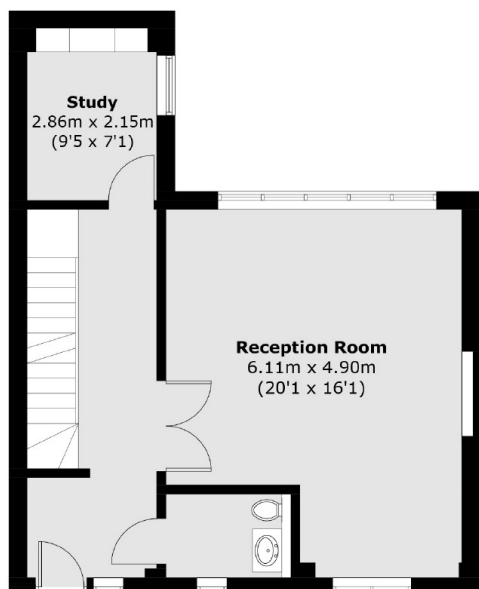
First Floor



Second Floor



Lower Ground Floor



Ground Floor

Total area (approx.): 199.7 sq. m (2,149.5 sq. ft)