



Lilestone Street, NW8

£350,000

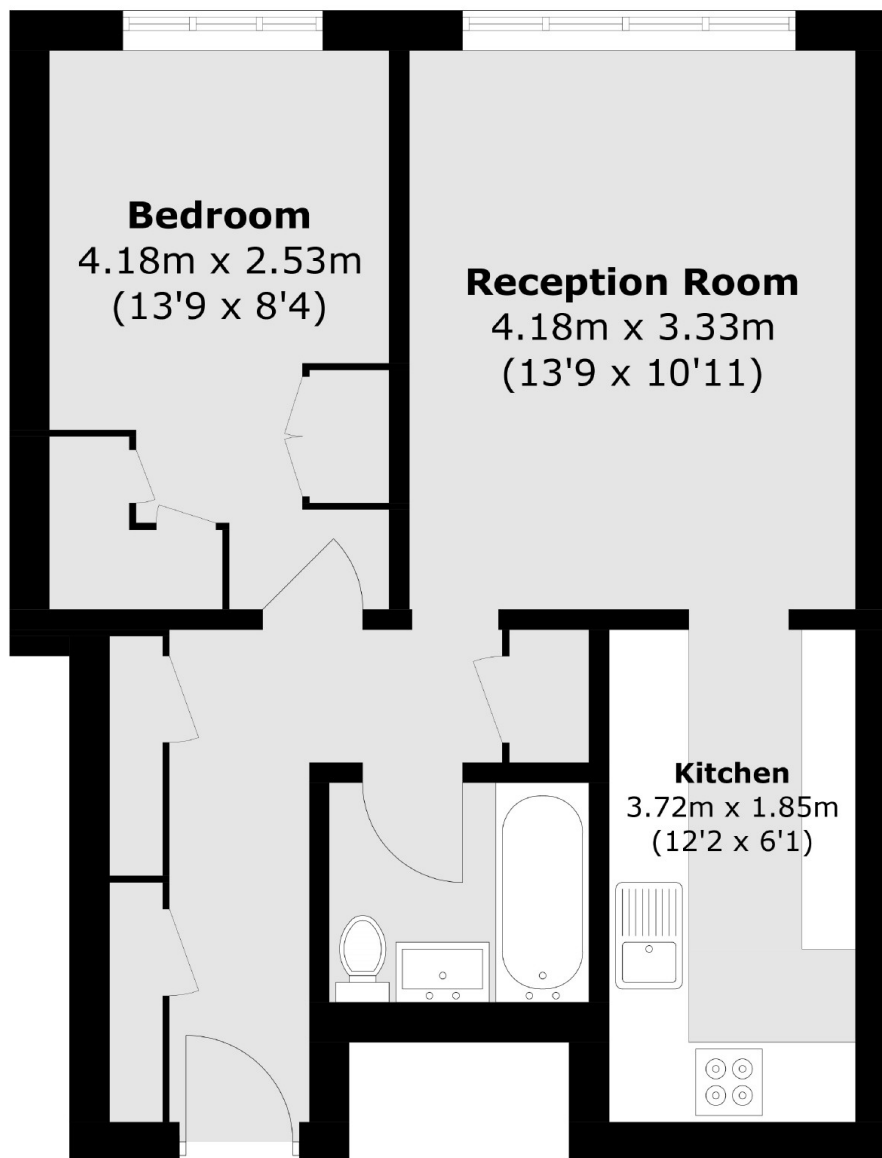
A one bedroom apartment set within a well-kept purpose built block which comprises of a spacious reception and large double bedroom with fitted wardrobes and contemporary kitchen and bathroom.

Lilestone Street is conveniently located close to Regents Park, St Johns Wood with its abundance of boutiques and restaurants, Baker Street and Marylebone.

Features

- One Double Bedroom
- Spacious Accommodation
- Communal Garden
- Chain Free
- Great Transport Links
- Fifth Floor Flat

Lilestone Street, London, NW8



Total area (approx.): 46.8 sq. m (503.7 sq. ft)