



Northwick Terrace, NW8

£1,500 Per week

Dexters



Northwick Terrace, NW8

A four double bedroom family home arranged over three floors with off street parking and a private rear garden in St John's Wood.

As you enter the house there is a good size lounge, separate kitchen and guest cloakroom on the ground floor. Kitchen with range cooker and granite worktops and access to rear decked garden. There is also a garage to the rear of the garden.

On the first floor you find a spacious front facing reception room with large floor to ceiling windows providing lots of natural light. To the rear you will find a master bedroom with built in storage and en suite bathroom.

There are three further double bedrooms with built in storage and family bathroom on the top floor.

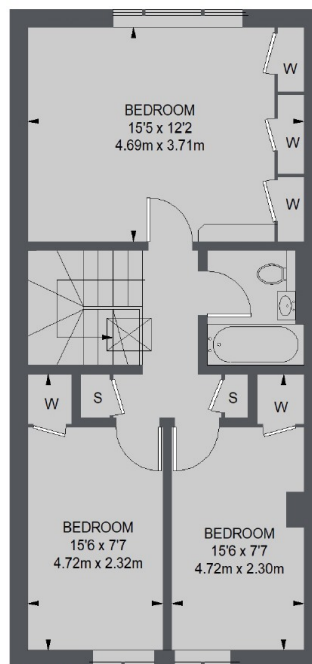
Northwick Terrace is a quiet residential street, close to Little Venice and its local shops and restaurants. Warwick Avenue underground station is also close by.

Features

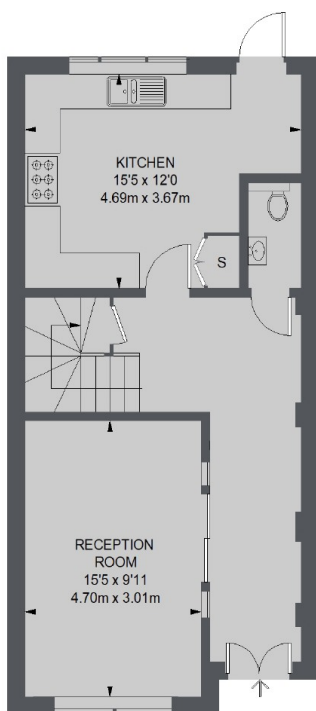
- Four Bedroom House
- Unfurnished
- Private Rear Garden
- Garage
- Two Bathrooms
- Wood Floors



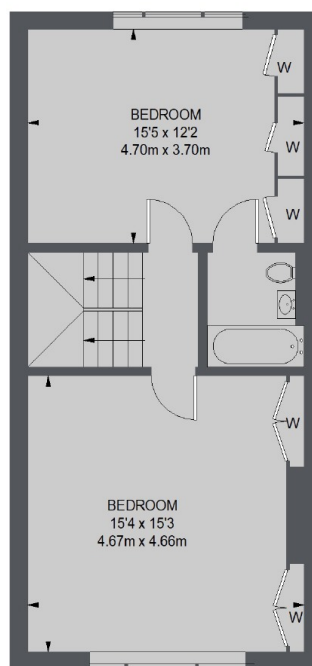
Northwick Terrace, London, NW8



SECOND FLOOR



GROUND FLOOR



FIRST FLOOR

TOTAL APPROX. FLOOR AREA 1602 SQ. FT. (148.84 SQ. M.)

Dexters

St. John's Wood
4-6 St Ann's Terrace
London
NW8 6PJ
Lettings
020 7483 6330

Energy Rating: D. We aim to make our particulars both accurate and reliable. However they are not guaranteed; nor do they form part of an offer or contract. If you require clarification on any points then please contact us, especially if you're traveling some distance to view. Please note that appliances and heating systems have not been tested and therefore no warranties can be given as to their good working order.

 **RICS** | Regulated
Estate Agent
and Letting Agent

dexters.co.uk