

Northwick Terrace, NW8

£1,750 Per week

A four double bedroom family home arranged over three floors with off street parking and a private rear garden in St John's Wood.

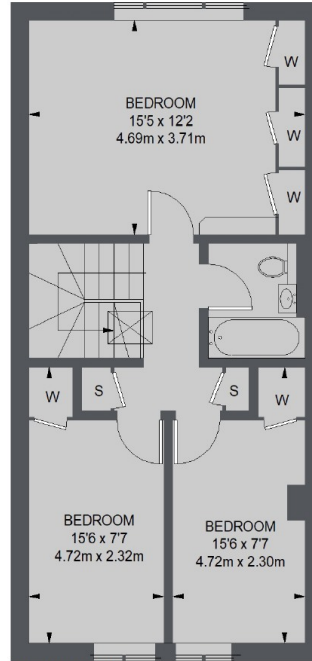
Northwick Terrace is a quiet residential street, close to Little Venice and its local shops and restaurants.

Warwick Avenue underground station is also close by.

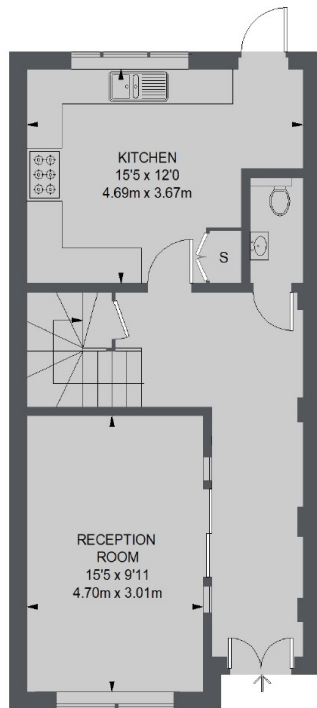
Features

- Four Bedroom House
- Unfurnished
- Private Rear Garden
- Garage
- Two Bathrooms
- Wood Floors

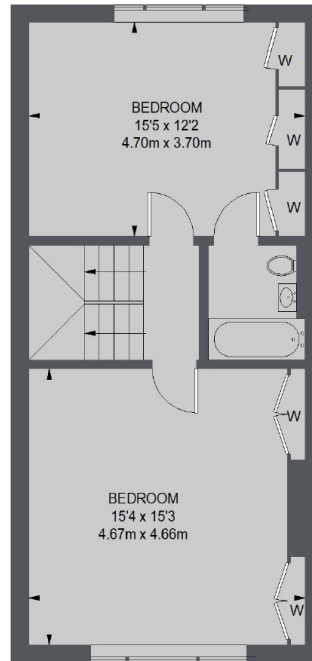
Northwick Terrace, London, NW8



SECOND FLOOR



GROUND FLOOR



FIRST FLOOR

TOTAL APPROX. FLOOR AREA 1602 SQ. FT. (148.84 SQ. M.)