



## Avenue Road, NW8

£2,250 Per week

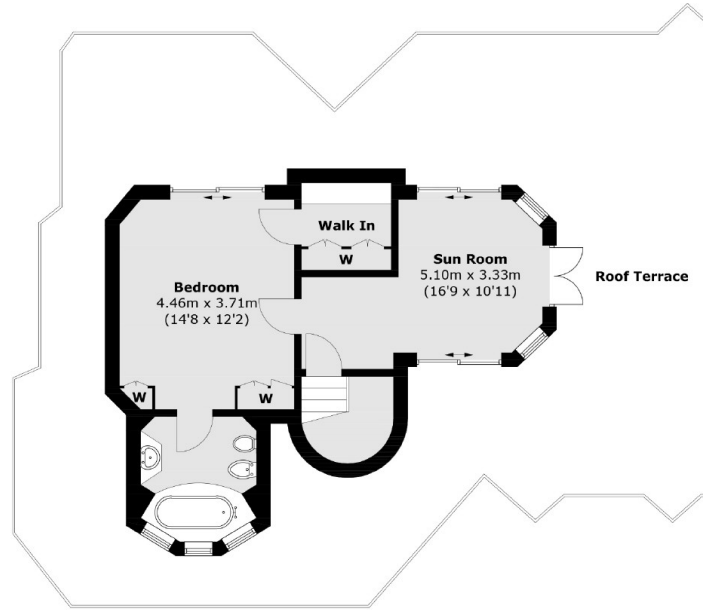
A spacious 2390 sq ft five bedroom, five bathroom split level penthouse apartment with wrap around roof terrace and underground parking for two cars.

Avenue Road is ideally located close the open spaces of Primrose Hill and Regent's Park and a short distance to St John's Wood High Street and underground station.

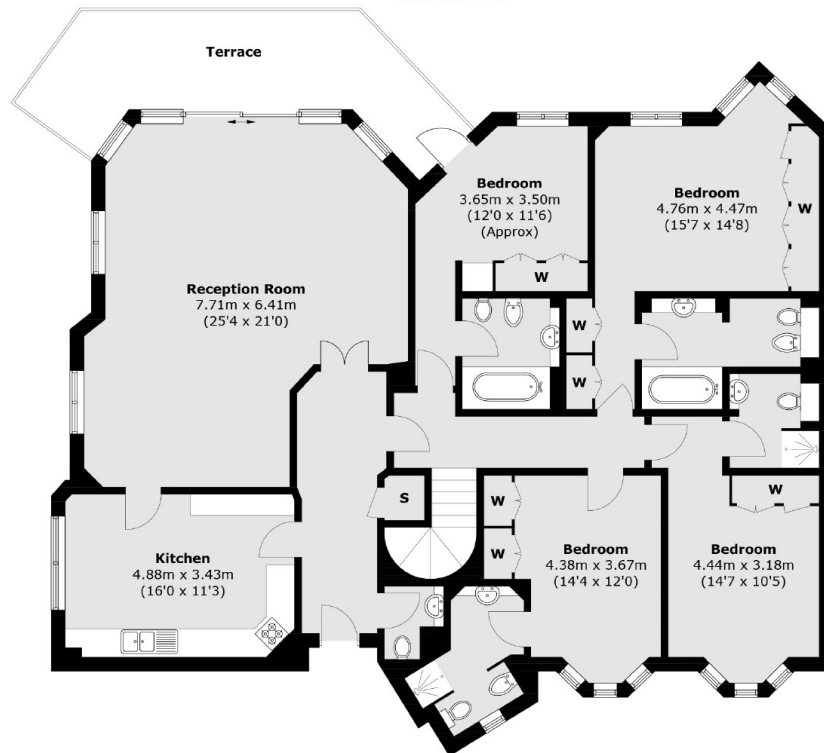
### Features

- Five Double Bedrooms
- Five Bathrooms
- Penthouse Apartment
- Arranged Over Two Floors
- Underground Parking
- Wrap Around Roof Terrace

Avenue Road,  
London, NW8



**Third Floor**



**Second Floor**

Total area (approx.): 222.1 sq. m (2,390.5 sq. ft)  
Roof Terrace area : 119.6 sq. m (1,287.3 sq. ft)