



St. Johns Wood Park, NW8

£890 Per week

A modern three double bedroom in 24 hour portered block in gated development. Bright spacious reception room with wood floors, modern kitchen, three double bedrooms and two bathrooms. Rent includes communal heating and hot water and off street parking space.

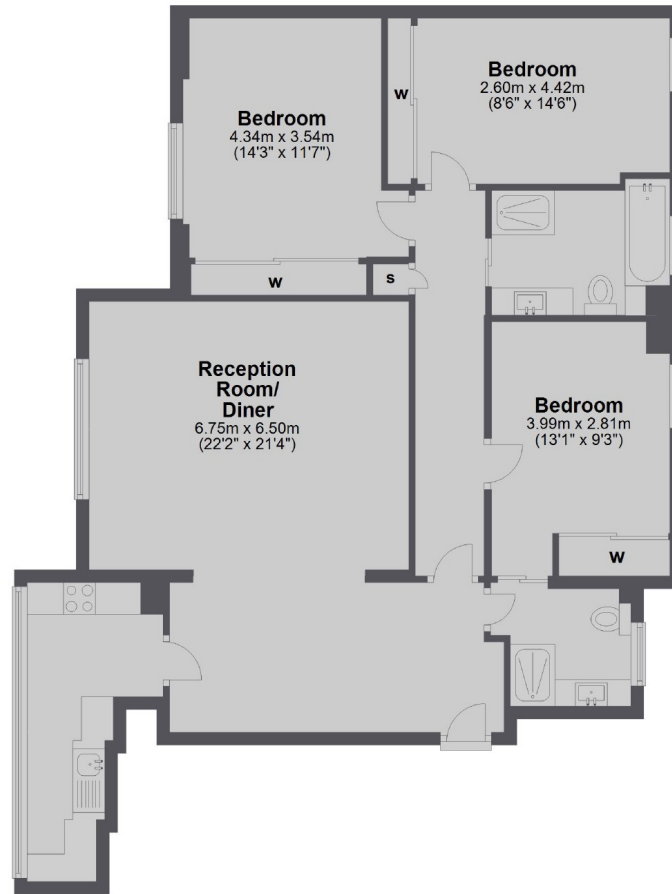
Boydell Court is in a gated development close to Swiss Cottage Jubilee Line station and local supermarkets, shops, cafés and restaurants on Finchley Road and St Johns Wood High Street.

Features

- Three Double Bedrooms
- 7th Floor Via Lift
- 24 Hour Porter
- Gated Development
- Communal Heating & Hot Water Included
- Swiss Cottage Station

St. Johns Wood Park, London, NW8

Seventh Floor



Total area: approx. 99.0 sq. metres (1066.0 sq. feet)