



## Bolton Road, NW8

£480 Per week

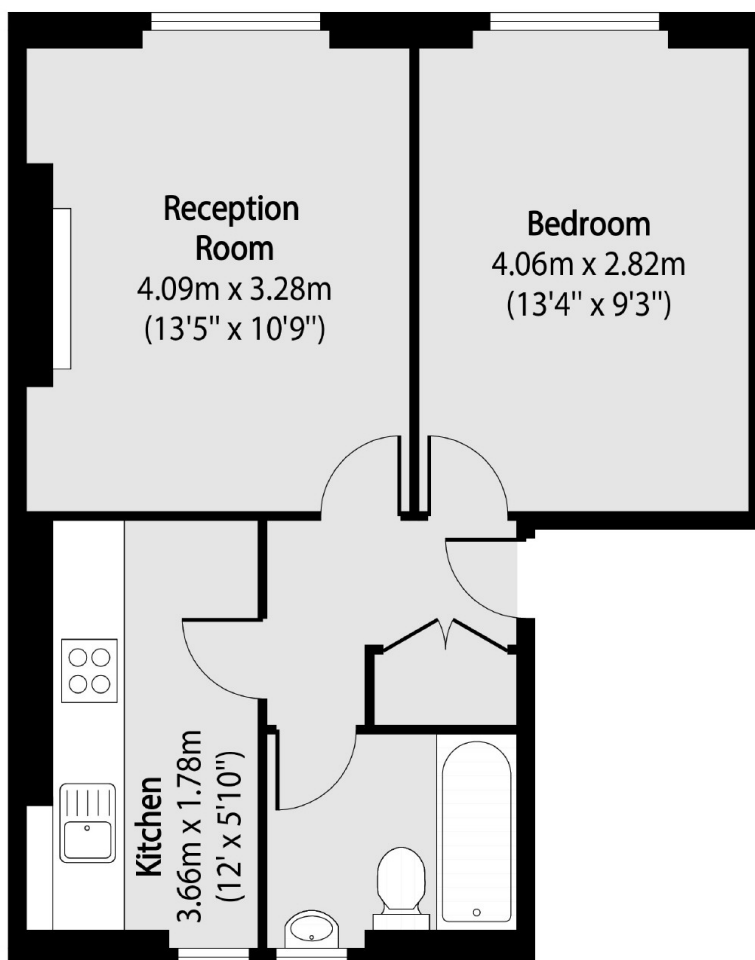
A bright one double bedroom apartment on the first floor of a period conversion. Good size reception room with wood floors, balcony and high ceilings, separate kitchen, double bedroom and bathroom with shower over bath. Ideal for a couple or single professional.

Bolton Road is located close to local shops, cafés and restaurants on Boundary Road.

### Features

- One Double Bedroom
- First Floor Apartment
- Separate Kitchen
- Shared Garden
- Wood Floors Throughout
- High Ceilings

Bolton Road,  
London, NW8



Total area (approx): 39.58 sq m (426 sq. ft)