



## Lisson Grove, NW1

£450,000

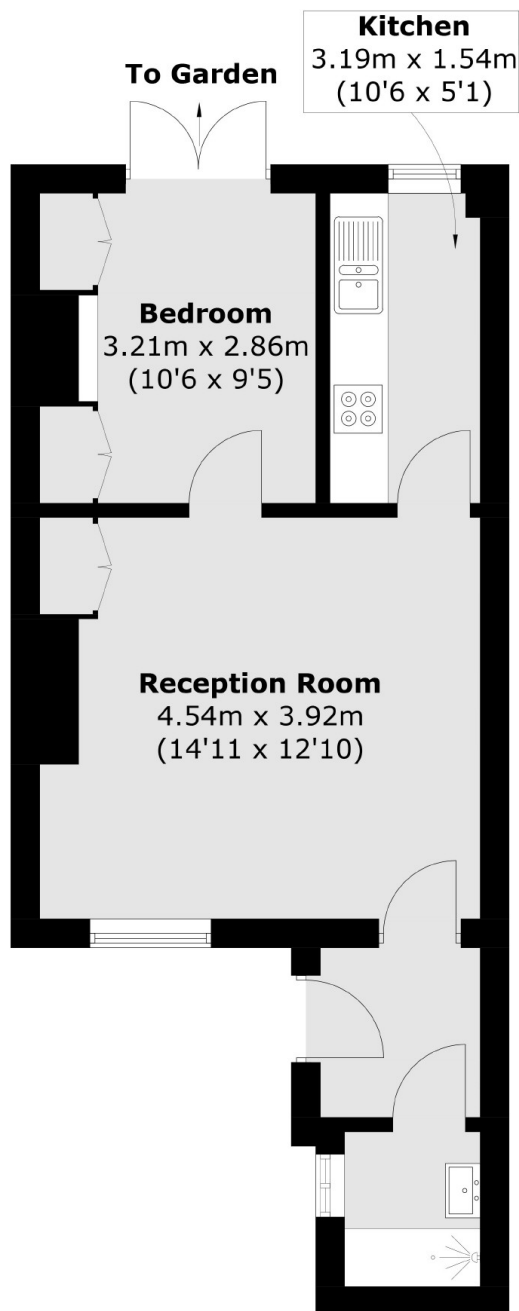
A one-bedroom garden-level flat in a Victorian conversion. Features include a newly renovated separate kitchen, a spacious reception area, and access to a large west-facing private garden. Ideal for first-time buyers entering the property market or as a rental investment opportunity.

Lisson Grove is a broad, tree-lined street linking Marylebone Road to St. John's Wood. The nearest underground stations are Marylebone and Baker Street, offering excellent connectivity.

### Features

- Private Garden
- Separate Kitchen
- One Double Bedroom
- Private Entrance
- Chain Free
- Great Transport Links

# Lisson Grove, London, NW1



Total area (approx.): 40.3 sq. m (433.8 sq. ft)