

## Elm Tree Road, NW8

£473 Per week

A bright one bedroom garden apartment in a 24 hour portered block close to St Johns Wood tube on the ground floor. Spacious reception room leading to communal garden, separate kitchen, double bedroom and bathroom. Communal hot water included within the rent.

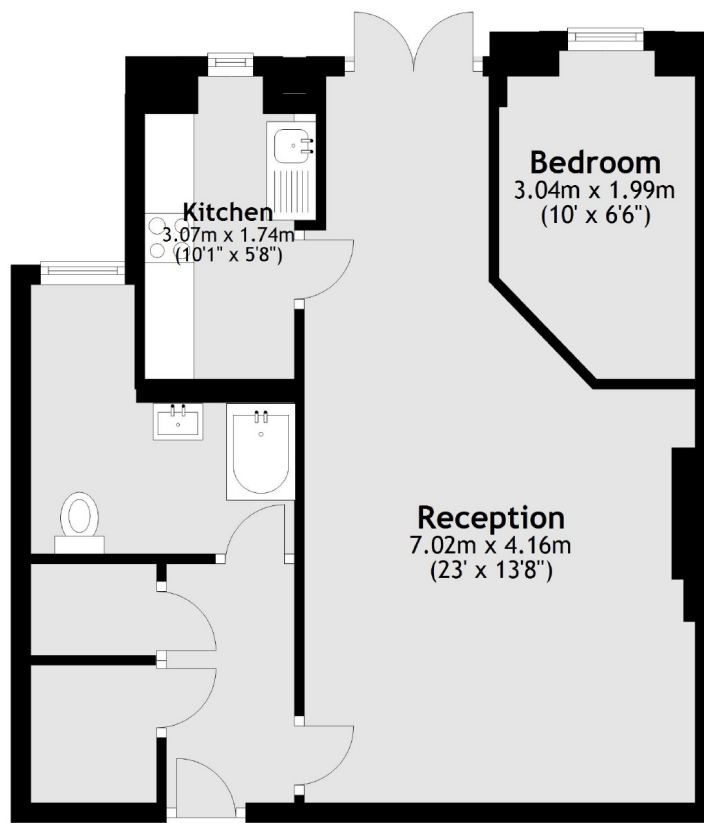
Elm Tree Court is located on a quiet residential street close to Lords Cricket Ground, Regents Park and St Johns Wood High Street.

### Features

- One Double Bedroom
- Mansion Block
- Ground Floor Flat
- Wood Floors
- Separate Kitchen
- Portered Block
- Communal Garden

Elm Tree Road,  
London, NW8

### Ground Floor



Total area: approx. 47.3 sq. metres (509.6 sq. feet)