



Grove End Road, NW8

£634 Per week

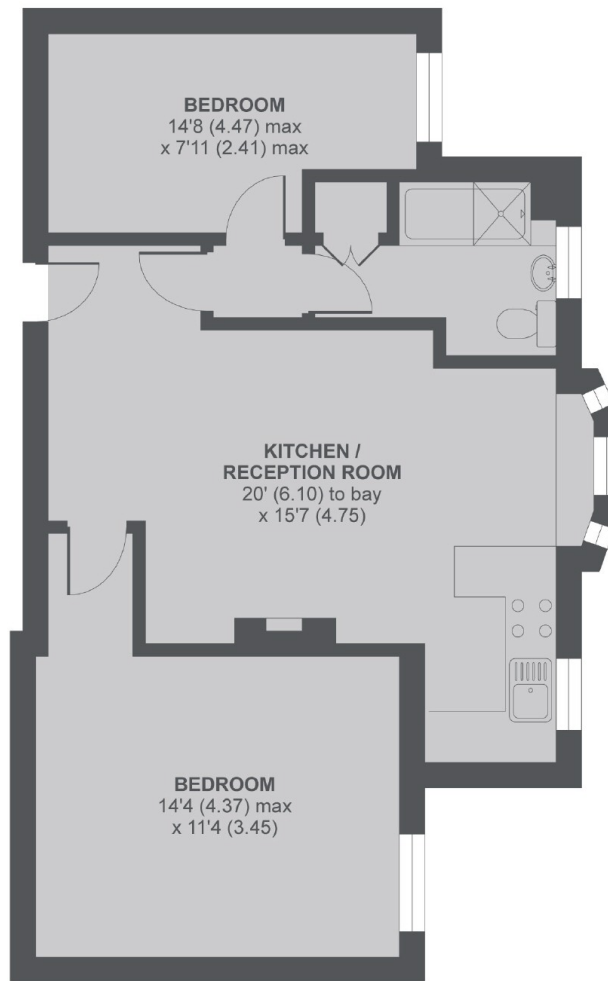
A good size two double bedroom apartment in a purpose built block close to St Johns Wood High Street. Bright reception room with feature fire place and wood floors, open plan kitchen, two double bedrooms and bathroom with shower over bath. Day porter and communal courtyard.

Grove Court is located a short distance to local shops, restaurants and cafés on St Johns Wood High Street and St John's Wood tube station giving residents good transport links to Central London and Canary Wharf on the Jubilee Line

Features

- Two Double Bedrooms
- Wood Floors In Reception
- Semi Open Plan Kitchen
- Ground Floor Apartment
- Day Porter
- Communal Hot Water

Grove End Road, London, NW8



Ground Floor

Grove End Road, NW8

MAIN HOUSE APPROX FLOOR AREA 661 SQ.FT 61.4 SQ.M

Copyright nichecom.co.uk 2018 REF : 255749

Dexters

St. John's Wood
4-6 St Ann's Terrace
London
NW8 6PJ

Lettings
020 7483 6330

Energy Rating: E. We aim to make our particulars both accurate and reliable. However they are not guaranteed; nor do they form part of an offer or contract. If you require clarification on any points then please contact us, especially if you're traveling some distance to view. Please note that appliances and heating systems have not been tested and therefore no warranties can be given as to their good working order.

 **RICS** | Regulated
Estate Agent
and Letting Agent

dexters.co.uk