

Abbey Road, NW8

£519 Per week

Two bedroom apartment on the fourth floor in a portered block in St Johns Wood. Benefits includes communal hot water, lift and access to communal garden. Ideal for couple looking for space, two professional sharers or small family.

Abbey House is located a short walk to St Johns Wood tube station and next Abbey Road Studios.

Features

Two Bedroom Flat
Fourth Floor Via Lift
Communal Garden
Porter
Communal Hot Water
Furnished

Abbey Road, London, NW8

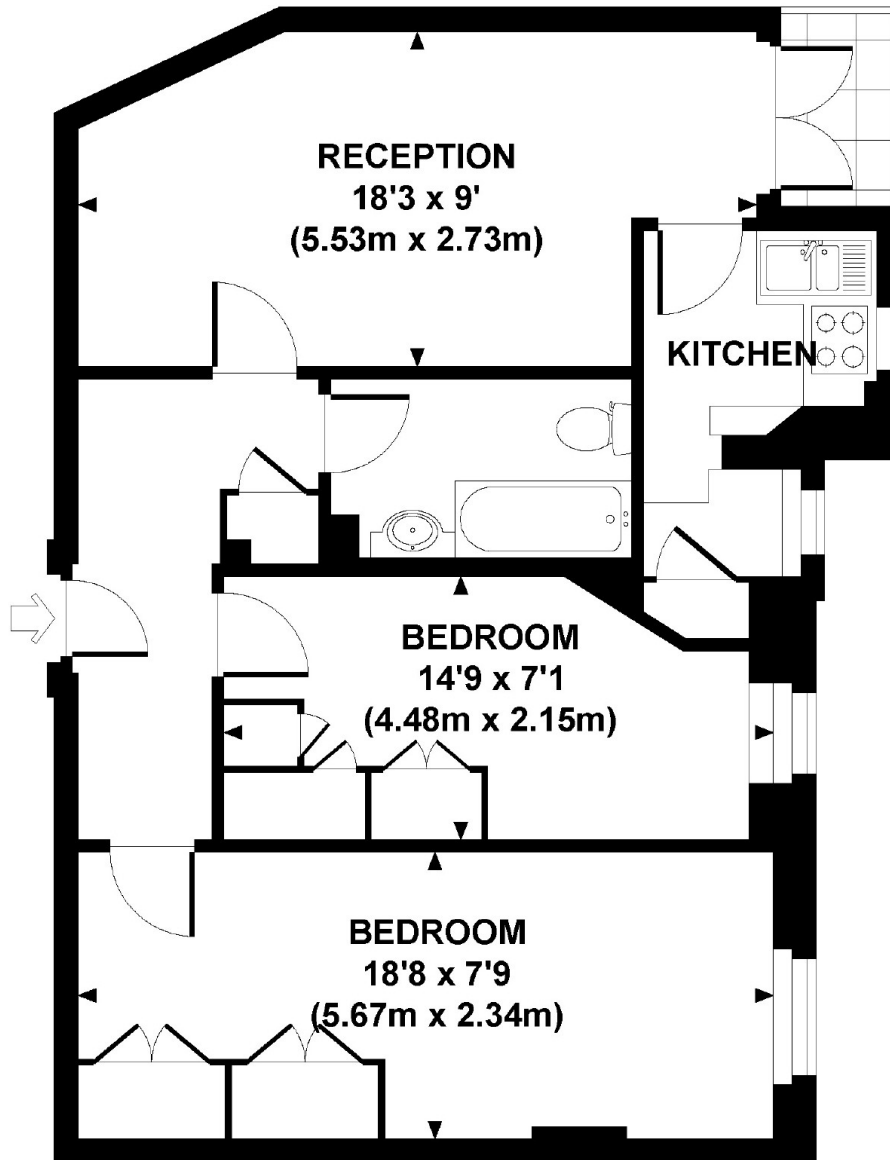
ABBHEY HOUSE, ABBHEY ROAD, NW8

Approx. gross internal area

558 Sq Ft / 51.8 Sq M.

Representation of current layout

Not to scale.



FOURTH FLOOR