

Loudoun Road, NW8

£507 Per week

A recently refurbished one double bedroom on the fifth floor of a modern new build block. Bright reception room with wood floors, open plan kitchen and balcony, good size double bedroom with built in wardrobe and bathroom with shower over bath. Good storage throughout.

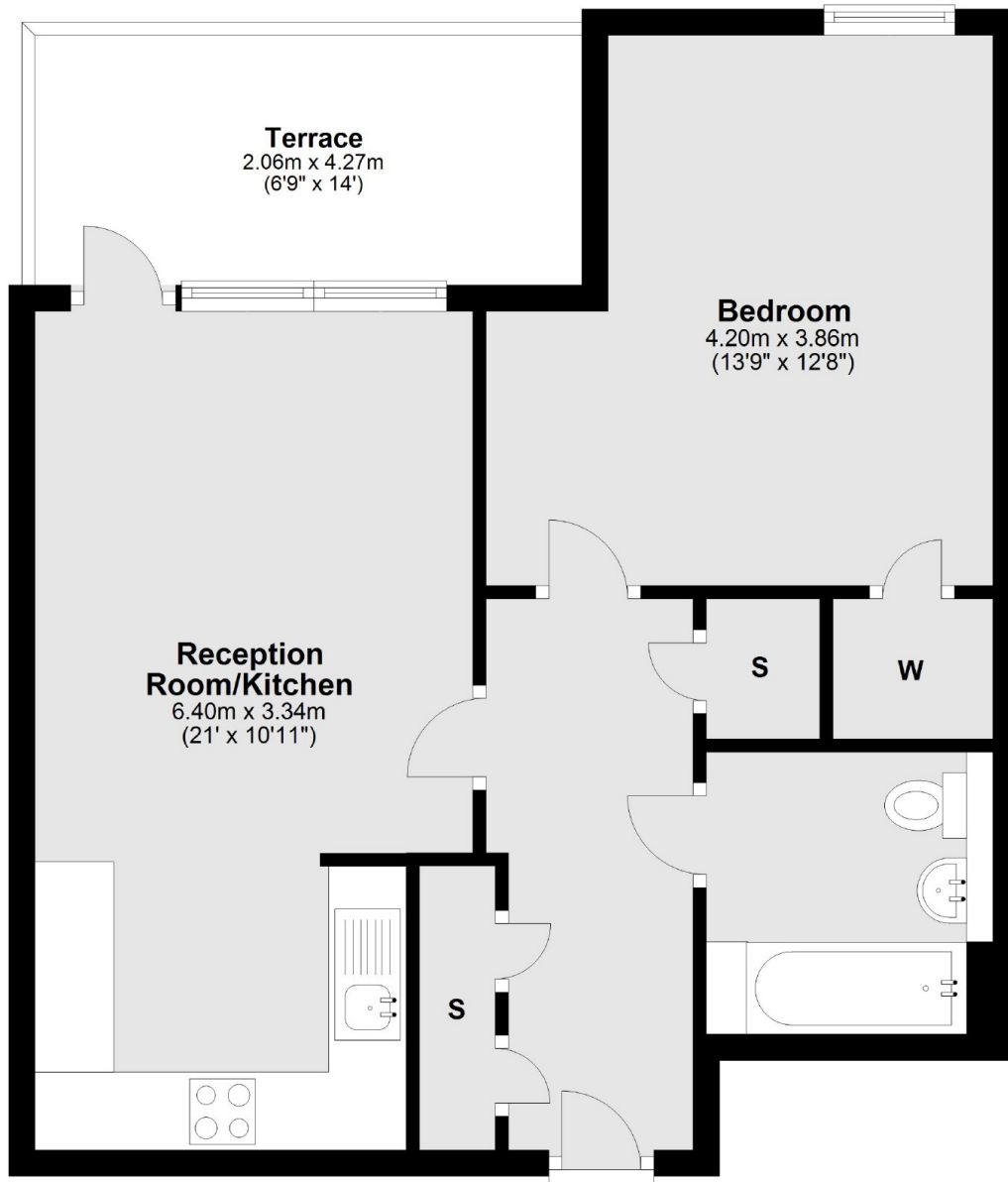
The building is ideally located next to South Hampstead station (one stop to Euston station) and a short distance to local shops, cafés and restaurants on Fairfax Road and Abbey Road.

Features

Recently Refurbished
One Double Bedroom
Fifth Floor Apartment
Lift
Open Plan Kitchen
Private Balcony

Loudoun Road,
London, NW8

Fifth Floor



Main area: Approx. 50.8 sq. metres (547.3 sq. feet)
Plus balconies, approx. 8.6 sq. metres (92.1 sq. feet)