



St. Johns Wood Road, NW8

£680 Per week

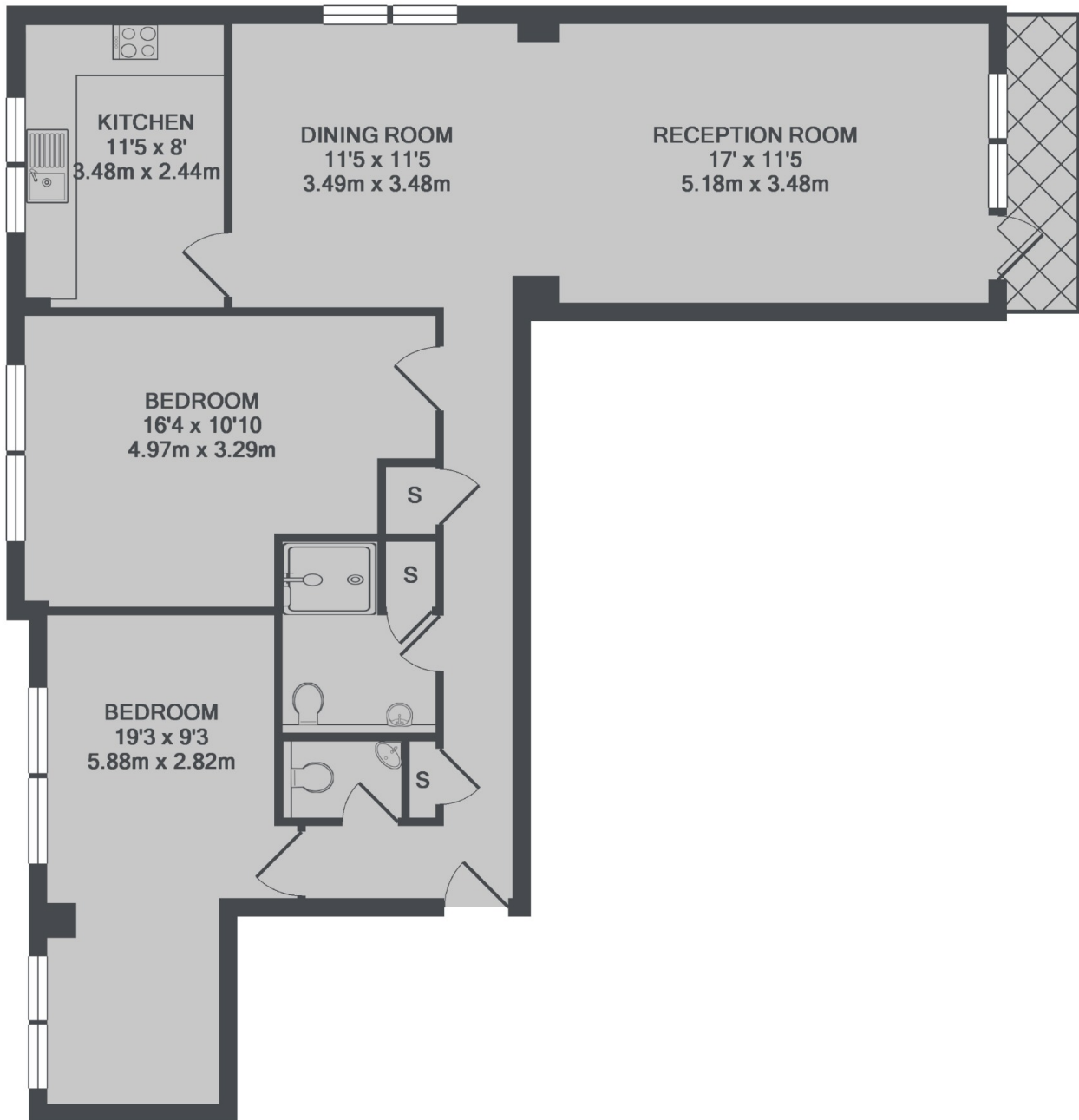
A spacious two double bedroom apartment on 7th floor of a portered block close to Regents Park. Double reception room with balcony, separate kitchen, two double bedrooms and family bathroom.

Lords View is located opposite Lords Cricket Ground and a short distance to Regents Park and local shops on St Johns Wood High Street.

Features

- Two Double Bedrooms
- Spacious Reception Room
- Balcony
- 7th Floor Via Lift
- Porter Service
- Separate Kitchen

St. Johns Wood Road,
London, NW8



TOTAL APPROX. FLOOR AREA 925 SQ.FT. (85.9 SQ.M.)