



## Grove End Road, NW8

£600 Per week

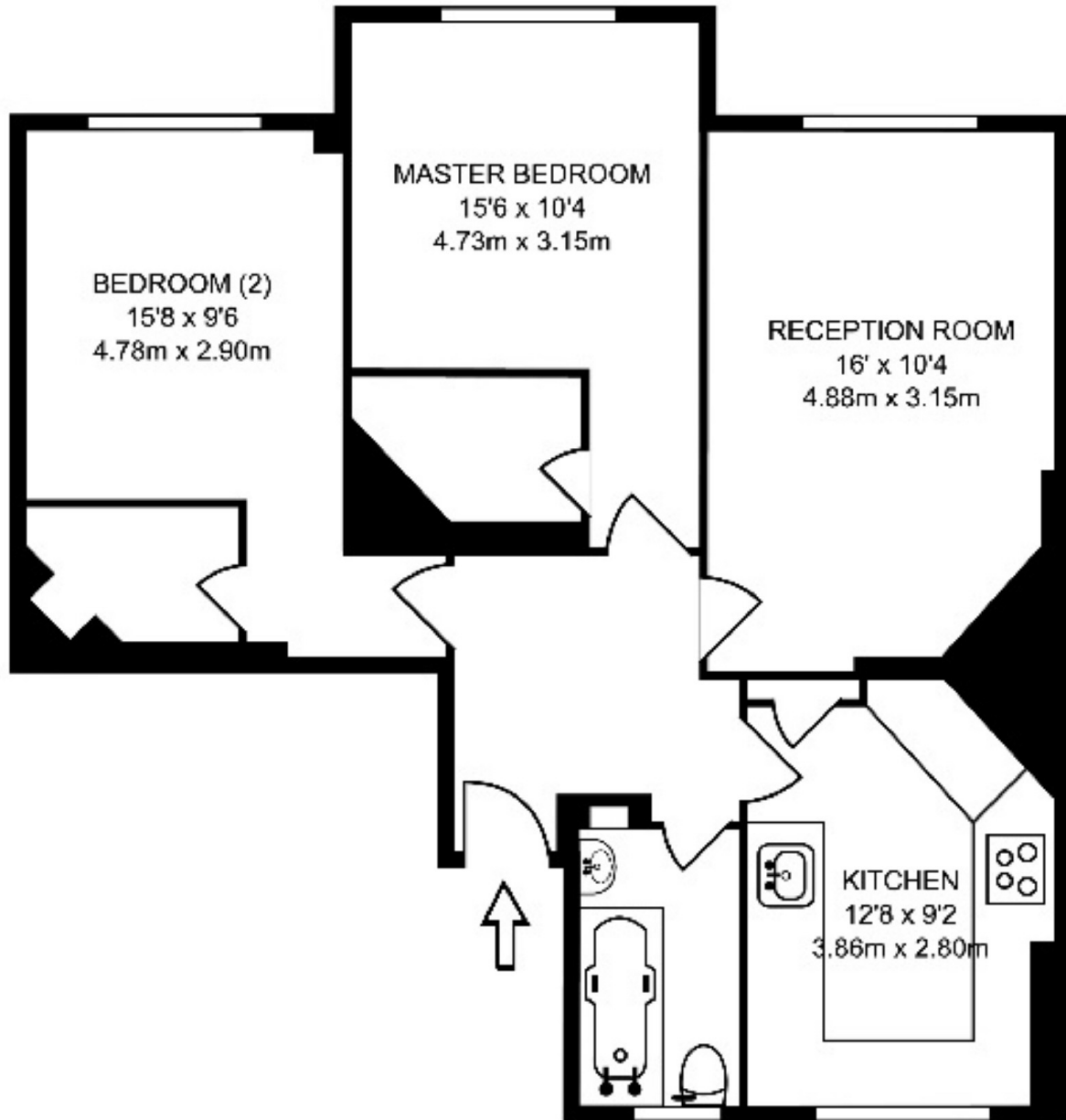
A bright two double bedroom apartment on seventh floor of a portered building in St Johns Wood. Spacious reception room with wood floors and plenty of natural light, separate modern kitchen, two double bedrooms with walk in wardrobes and bathroom with shower over bath.

Grove End House is located close to Lords Cricket Ground, Regents Park and local shops, cafés and restaurants in Little Venice.

### Features

- Two Double Bedrooms
- Bright Reception Room
- 7th Floor Via Lift
- Day Porter
- Communal Garden
- Good Storage

Grove End Road,  
London, NW8



SEVENTH FLOOR GROSS INTERNAL FLOOR AREA

710 SQ FT/65.99 SQ M

**Dexters**

St. John's Wood  
4-6 St Ann's Terrace  
London  
NW8 6PJ

Lettings  
020 7483 6330

Energy Rating: C. We aim to make our particulars both accurate and reliable. However they are not guaranteed; nor do they form part of an offer or contract. If you require clarification on any points then please contact us, especially if you're traveling some distance to view. Please note that appliances and heating systems have not been tested and therefore no warranties can be given as to their good working order.



dexters.co.uk