



## Shannon Place, NW8

£575 Per week

A bright two bedroom apartment on the first floor of a purpose built block close to Regents Park. Spacious reception room with dining area, separate kitchen, two double bedrooms and modern bathroom. Access to communal garden.

Townshend Court is located a short walk to St Johns Wood High Street and close to Regents Park and Primrose Hill.

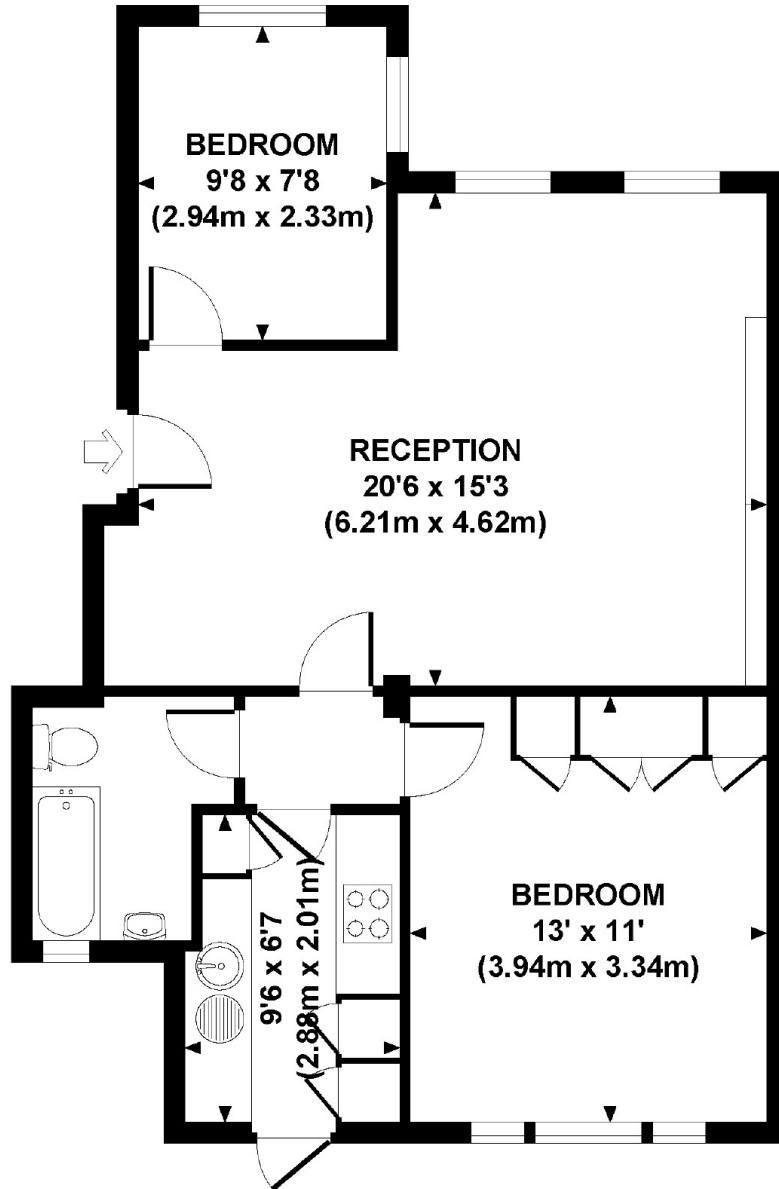
### Features

- Two Bedrooms
- First Floor Apartment
- Spacious Reception Room
- Modern Kitchen
- Furnished
- Communal Garden

Shannon Place,  
London, NW8

**TOWNSHEND COURT, SHANNON PLACE,  
ST. JOHNS WOOD, NW8**

Approx. gross internal area  
613 Sq Ft. / 57.0 Sq M.  
Representation of current layout.  
Not to scale.



**FIRST FLOOR**