



Abercorn Close, NW8

£1,108 Per week

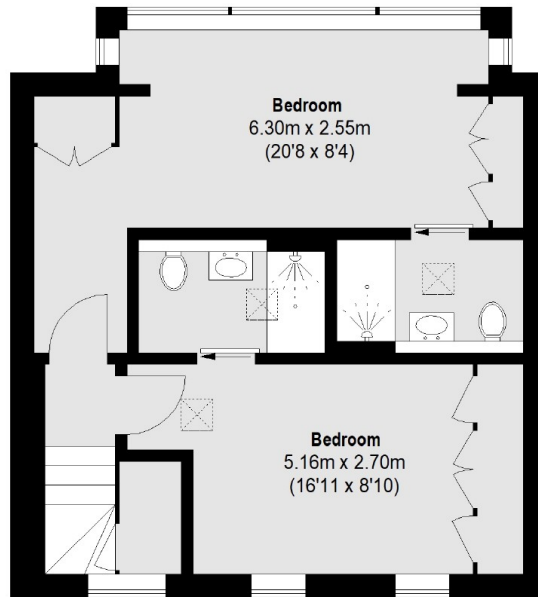
A modern two double bedroom house with patio garden located on a quiet cobbled mews in St Johns Wood. Bright reception leading to patio garden, modern kitchen, two double bedrooms with en suite showers room and a garage. Unique home for two professional sharers, a couple or a family.

Abercorn Close is just located off of Abercorn Place and St Johns Wood and Maida Vale stations are close by giving residents good transport links into the city.

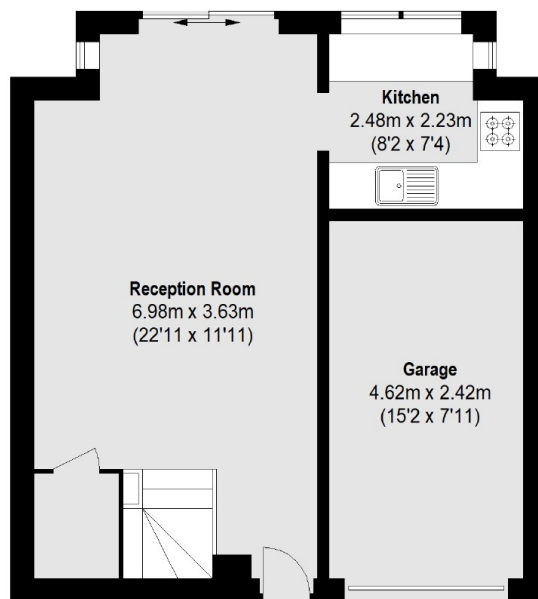
Features

- Two Double Bedrooms
- Two Bathrooms
- Mews House
- Arranged Over Two Floors
- Private Patio Garden
- Wood Floors

Abercorn Close, London, NW8



First Floor



Ground Floor

Total area (approx.): 86.32 sq. m (929 Sq. ft)