



Lyons Place, NW8

£595 Per week

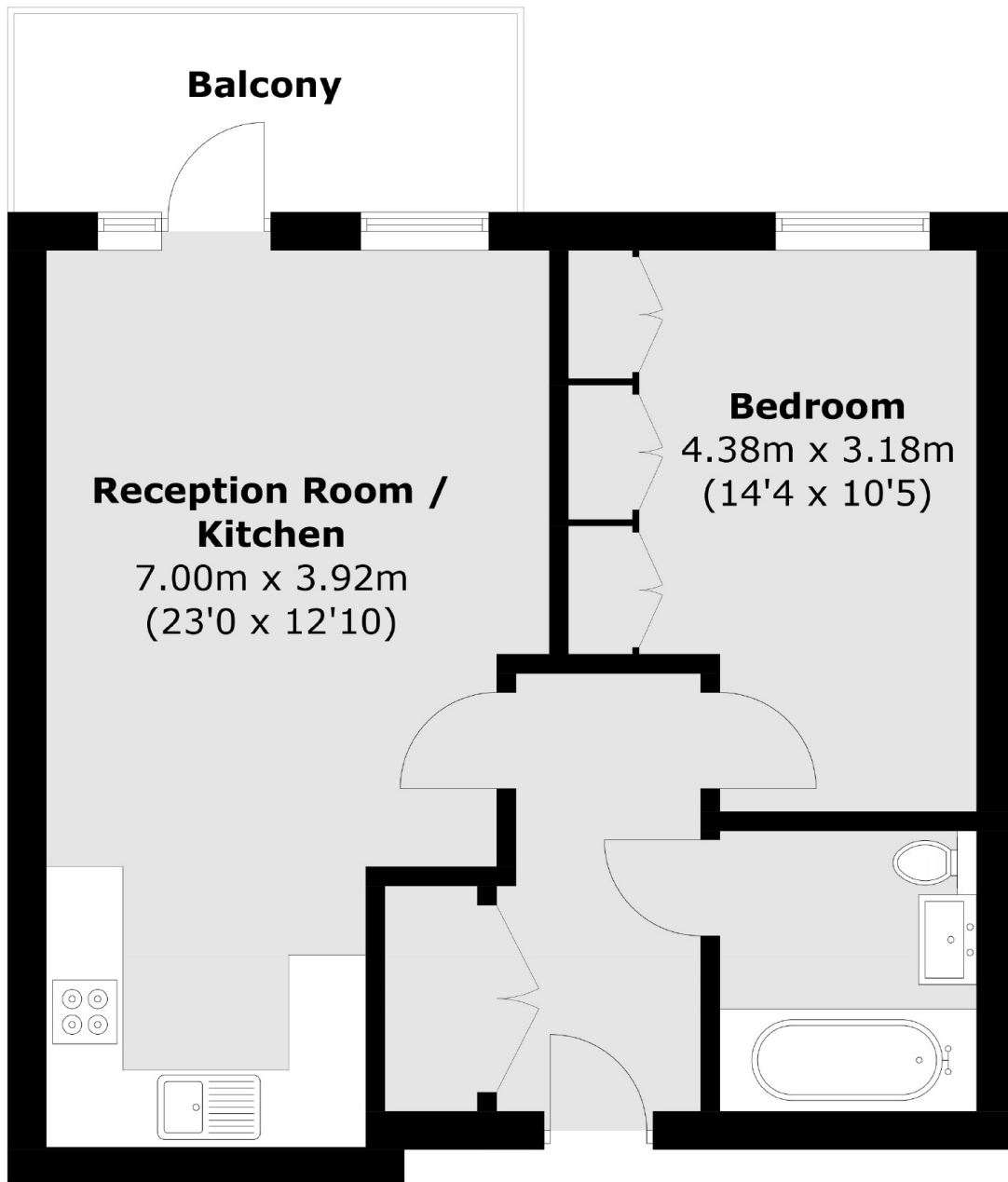
This stunning one bedroom apartment boasts a beautiful open plan living area leading onto a private terrace. The development further benefits from a secure concierge where apartments have access to the manicured communal garden of Lyons Place. The property has been furnished to a high standard.

Lyons Place is equidistant from Hyde Park and Regents Park, offering large open spaces with tree-lined pathways, children's playgrounds, sports facilities and formal gardens. Closer to home, Paddington Recreation Ground or Rembrandt Gardens offer great spots for fitness, dog walking and picnics. The canal offers water activities such as kayaking and stand-up paddle boarding.

Features

- Open Plan Living Area
- Private Terrace
- High-Quality Finishes
- Secure Concierge Service
- Secure Communal Gardens
- Central Location

Lyons Place,
London, NW8



Total area (approx.): 50.0 sq. m (538.2 sq. ft)
Balcony: 6.1 sq. m (65.7 sq. ft)