



Grove End Road, NW8

£807 Per week

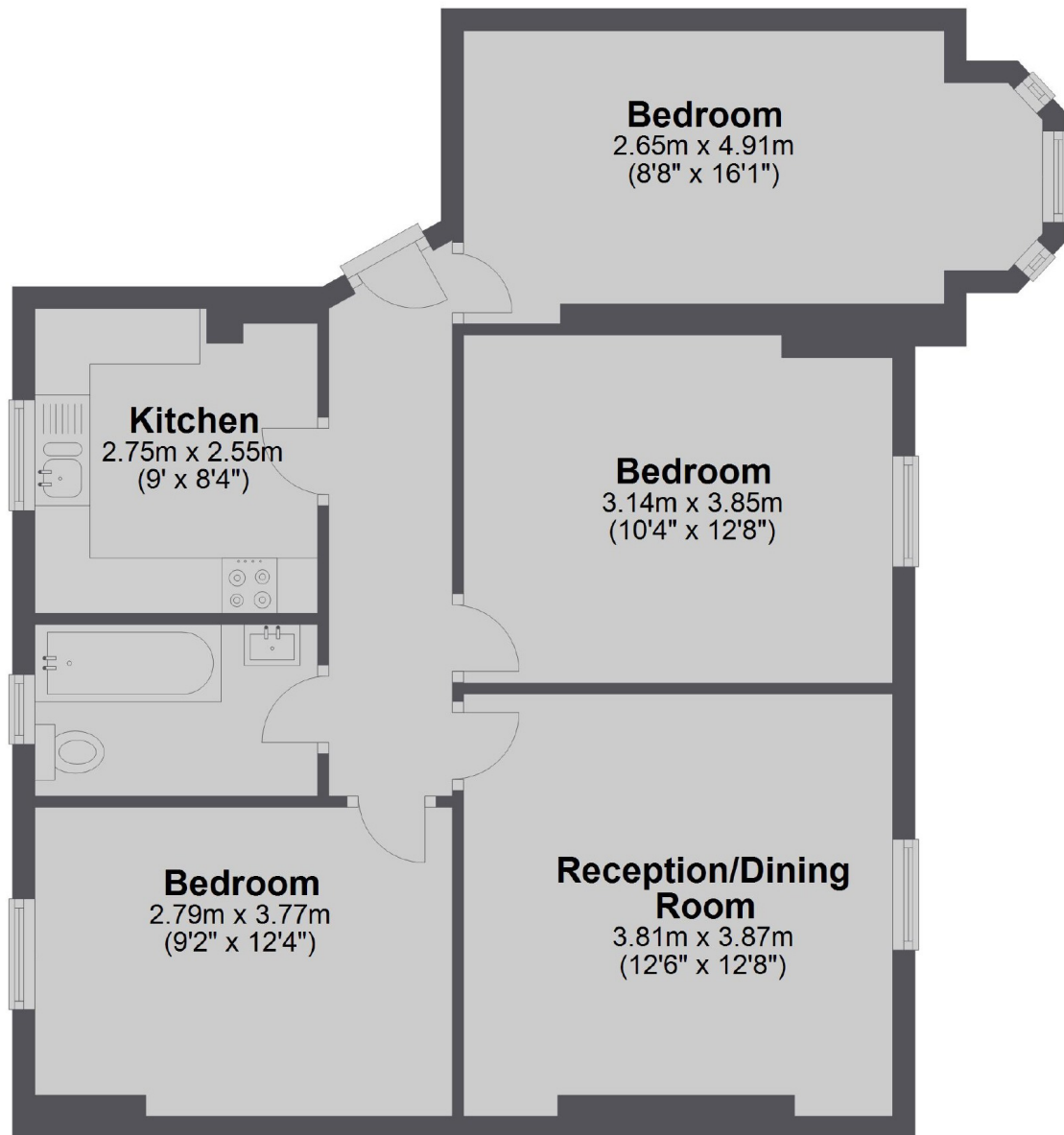
A three double bedroom apartment on the first floor of purpose built block in St Johns Wood. The property has wood floors throughout and is offered furnished. Ideal for three professional sharers or family.

Bronwen Court is located close to Lords Cricket Ground and a short walk to St Johns Wood Underground Station (Jubilee Line).

Features

- Three Double Bedrooms
- First Floor Apartment
- Wood Floors Throughout
- Furnished
- Purpose Built Block
- Separate Kitchen

Grove End Road,
London, NW8



Total area: approx. 69.0 sq. metres (743.0 sq. feet)