



St. James's Terrace Mews, NW8

£1,090 Per week

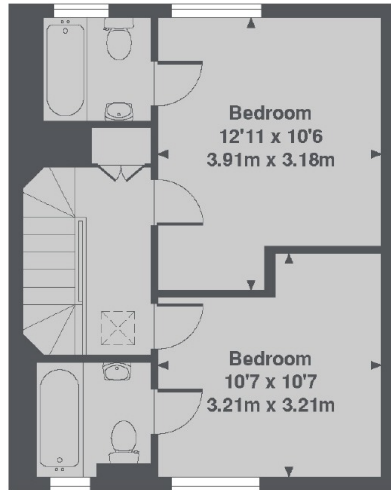
A rarely available modern three double bedroom house quietly tucked away on private mews. Spacious eat in kitchen on the ground floor with private terrace, large reception room with wood floors on first floor, master bedroom with en-suite bathroom and walk in wardrobe on second floor. Two further double bedrooms both with en-suite bathrooms on top floor.

Jame's Terrace Mews offers a desirable location moments from the open spaces of both Regent's Park and Primrose Hill, with the trendy boutique shops and cafés of St John's Wood High Street.

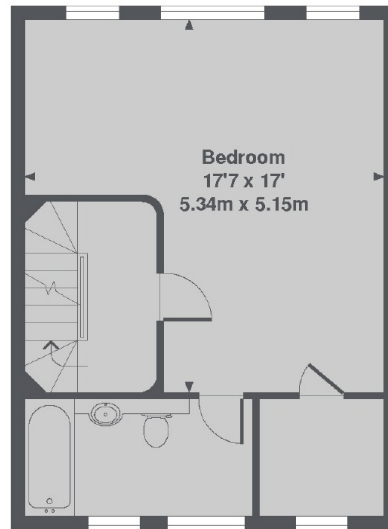
Features

- Recently Refurbished
- Mews House
- Three Double Bedrooms
- Separate Kitchen
- Three Modern Bathrooms
- Private Storage in Garage

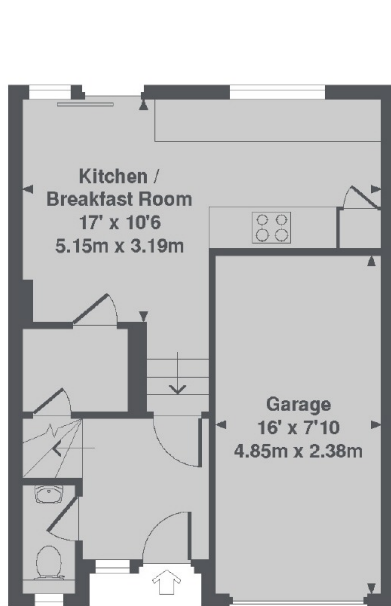
St. James's Terrace Mews, London, NW8



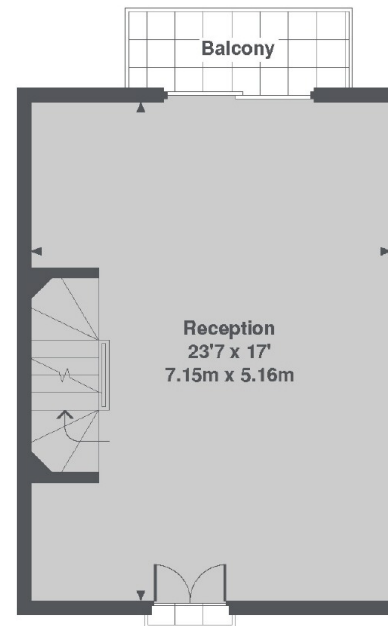
3rd floor



2nd Floor



Ground Floor



1st Floor

St. James's Terrace Mews, NW8
Total Approx. Floor area 1528 Sq. Ft. (142.0 Sq. M.)