



Abbey Road, NW8

£895 Per week

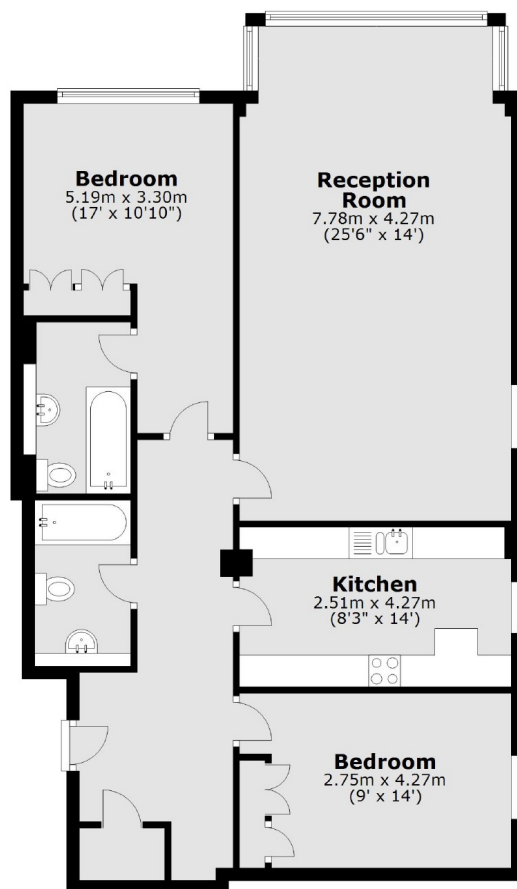
Spacious two bedroom, two bathroom apartment on the sixth floor (with lift) in 24 hour portered block. Large reception room, two double bedrooms with storage, separate kitchen and two bathrooms. The flat also comes with 24 hour porter, communal indoor swimming pool and underground parking.

20 Abbey Road is located a short walk to St Johns Wood (Jubilee Line) and Maida Vale (Bakerloo Line) underground stations giving you great access into the city.

Features

- Two Double Bedrooms
- Sixth Floor Via Lift
- 24 Hour Porter
- Two Bathrooms
- Indoor Swimming Pool
- Underground Parking

Abbey Road, London, NW8



Total area: approx. 93.8 sq. metres (1010.1 sq. feet)