



## Abbey Road, NW8

£623 Per week

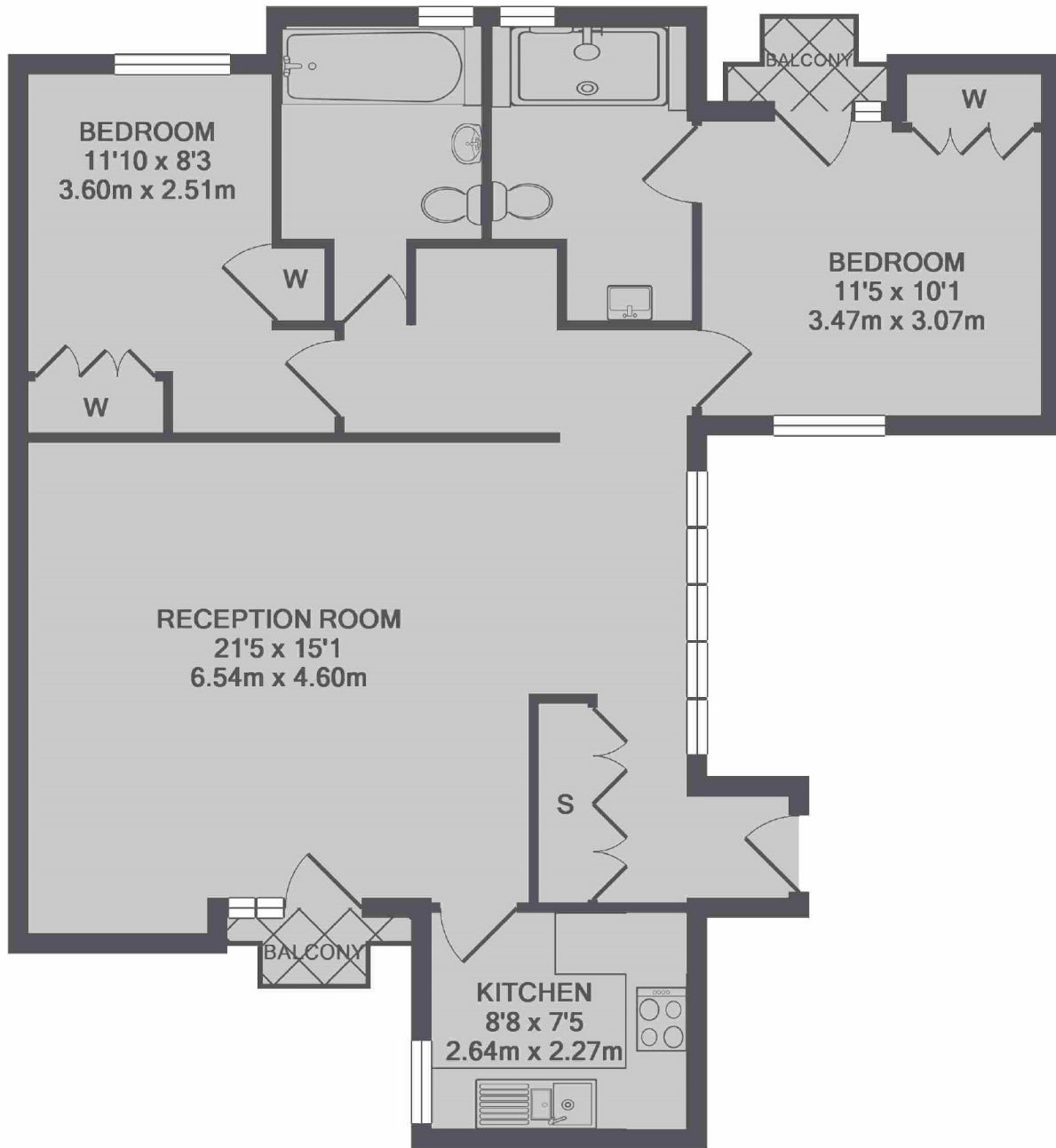
A spacious two bedroom, two bathroom apartment on the first floor in a portered block on Abbey Road. Large reception room with wood floors leading to a private balcony, separate kitchen, master bedroom with en-suite bathroom, second double bedroom and family bathroom.

Matlock Court is located on Abbey Road and less than a mile from St John's Wood High Street and Underground station (Jubilee Line) and a short distance to local shops and cafes on Abbey Road & Boundary Road.

### Features

- Two Double Bedrooms
- Two Bathrooms
- Wood Floors In Reception
- Private Balcony
- Modern Kitchen and Bathrooms
- First Floor Apartment

Abbey Road,  
London, NW8



TOTAL APPROX. FLOOR AREA 821 SQ.FT. (76.3 SQ.M.)