

Alma Square, NW8

£507 Per week

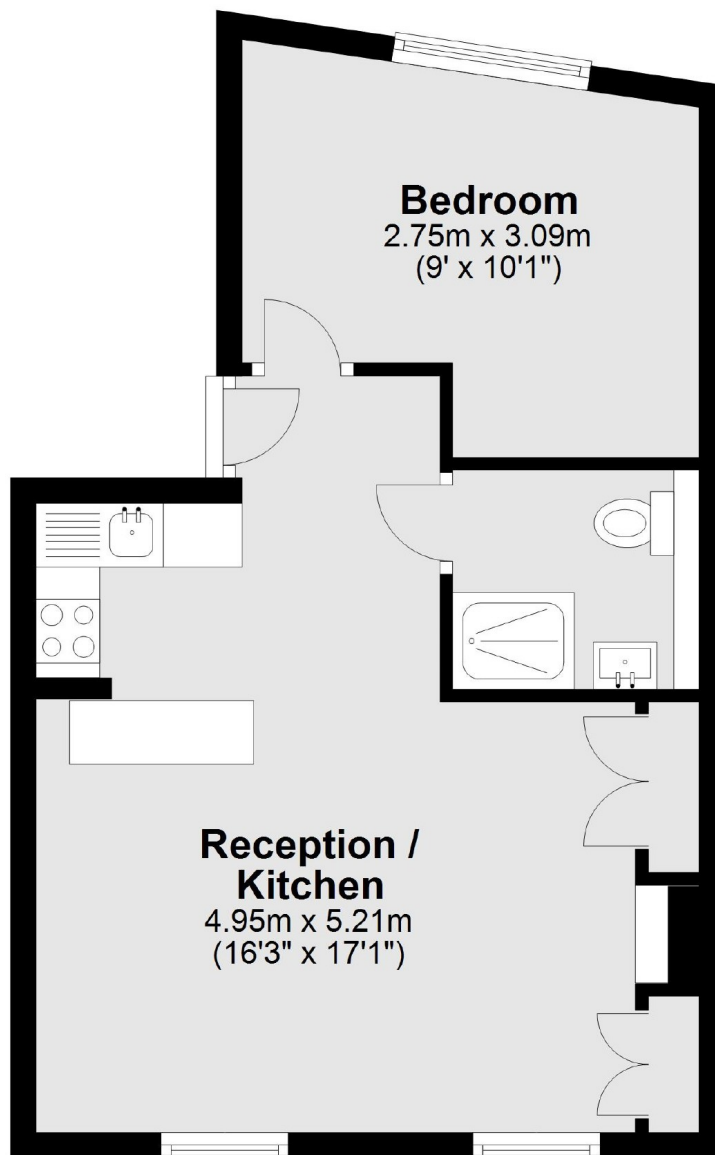
One double bedroom apartment on the first floor of period conversion. Open plan kitchen reception room, shower room and double bedroom with built in storage. Wood floors and high ceilings throughout. Access to communal garden.

Alma Square is a quiet residential street located just behind Abbey Road - short walk to St Johns Wood tube and High Street.

Features

- One Double Bedroom
- Wood Floors
- First Floor
- Period Conversion
- Communal Garden
- Open Plan Kitchen

Alma Square,
London, NW8



Total area: approx. 37.9 sq. metres (408.0 sq. feet)