



Aquila Street, NW8

£795,000

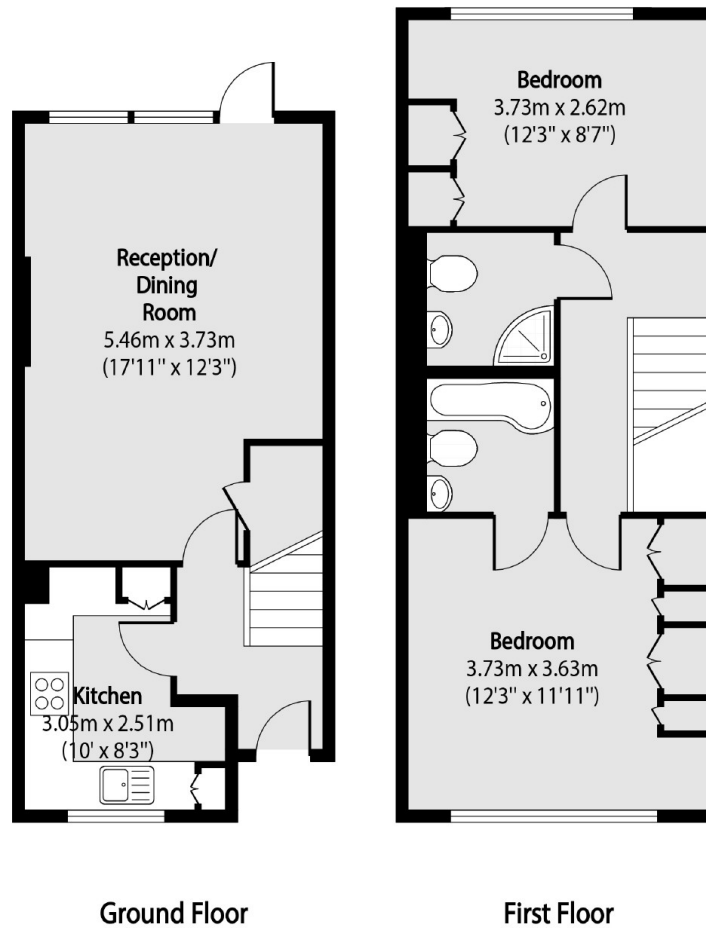
A spacious two double bedroom split-level apartment with a patio garden and a private entrance. Spacious reception room, dining area in conservatory leading to rear garden, modern separate kitchen, two double bedrooms, one en-suite and a separate bathroom.

Aquila Street is located off St John's Wood High Street making it ideal for those wanting to be close to Jubilee Line and local shops, bars and restaurants in St Johns Wood.

Features

- Newly Refurbished
- Two Double Bedrooms
- Split-Level
- Spacious Reception & Dining
- Two Bathrooms
- Rear Garden

Aquila Street, London, NW8



Total area (approx): 68.19 sq m (734 sq. ft)