



Aquila Street, NW8

£850,000

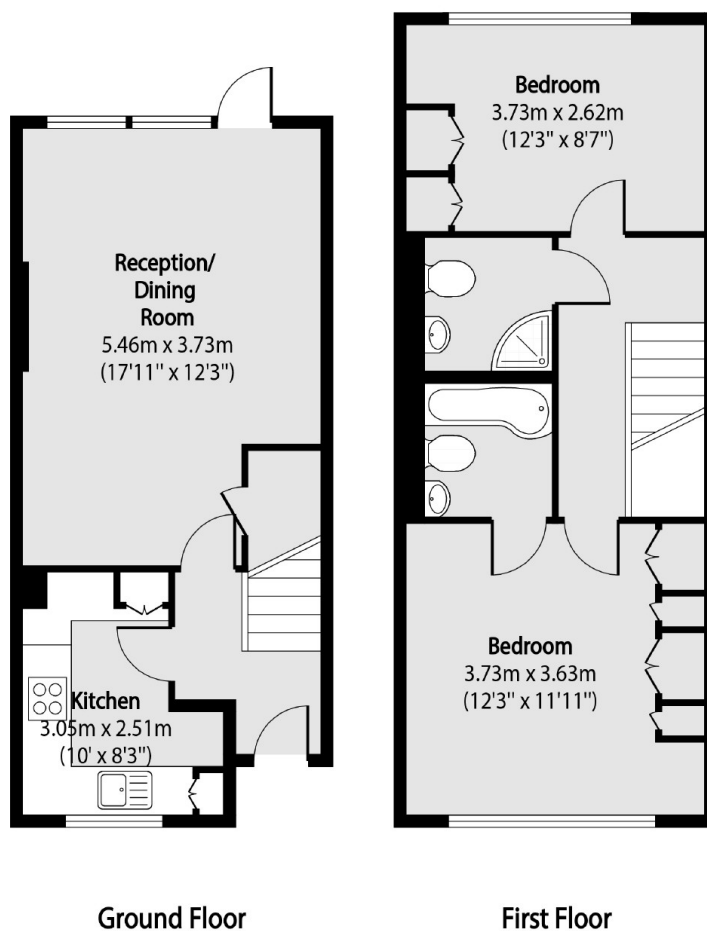
A spacious two double bedroom split-level apartment with a patio garden and a private entrance. Spacious reception room, dining area in conservatory leading to rear garden, modern separate kitchen, two double bedrooms, one en-suite and a separate bathroom.

Aquila Street is located off St John's Wood High Street making it ideal for those wanting to be close to Jubilee Line and local shops, bars and restaurants in St Johns Wood.

Features

Newly Refurbished
Two Double Bedrooms
Split-Level
Spacious Reception & Dining
Two Bathrooms
Rear Garden

Aquila Street, London, NW8



Total area (approx): 68.19 sq m (734 sq. ft)