



Finchley Road, NW8

£461 Per week

A spacious one double bedroom apartment on the top floor of a period conversion. Bright reception room, separate kitchen, good size double bedroom and family bathroom. Property will be repainted and have new carpets throughout.

Located on Finchley Road, giving tenants easy access to St John's Wood Underground station (Jubilee Line) and local shops, restaurants and cafés on Finchley Road and St John's Wood High Street.

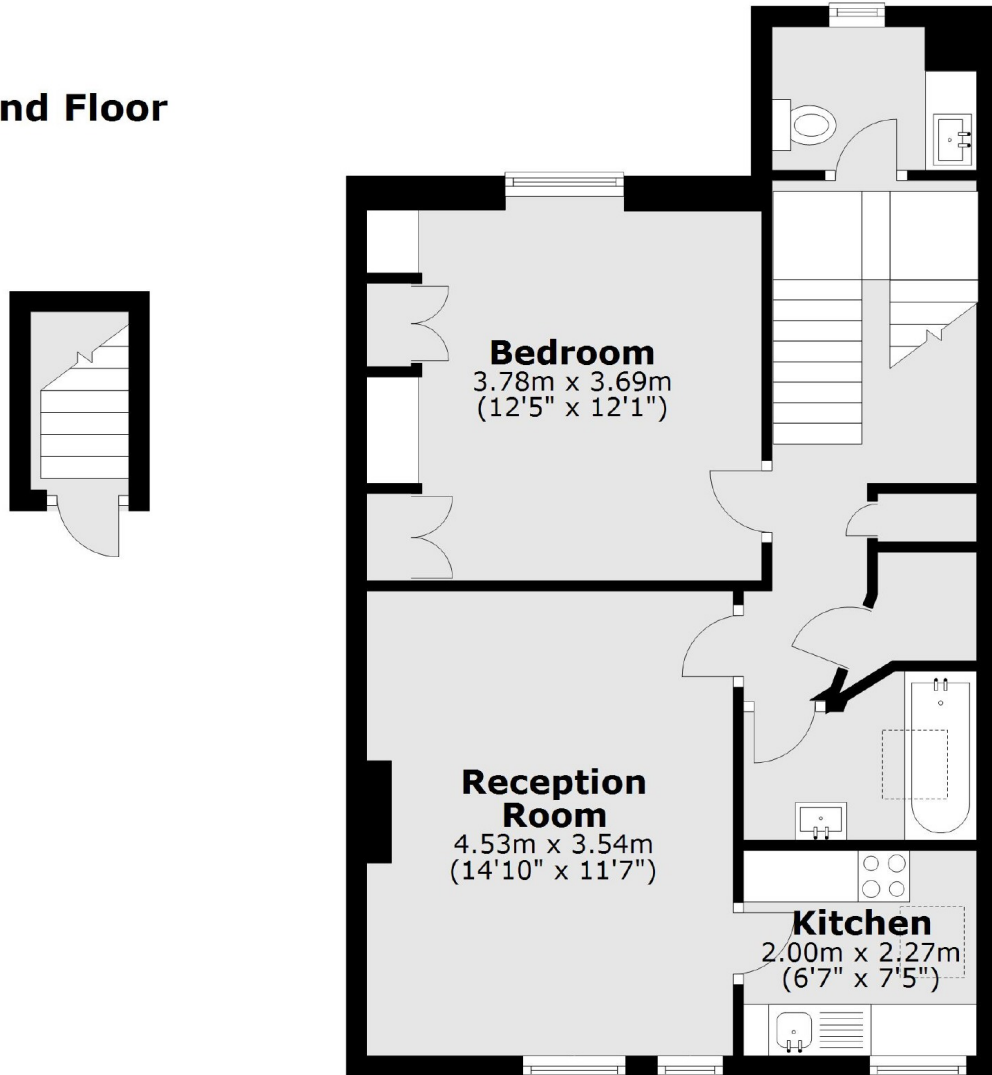
Features

- One Double Bedroom
- Modern Kitchen and Bathroom
- Great Location
- Period Conversion
- Top Floor Apartment

Finchley Road,
London, NW8

Third Floor

Second Floor



Total area: approx. 53.7 sq. metres (577.7 sq. feet)