



St. Johns Wood Road, NW8

£1,400 Per week

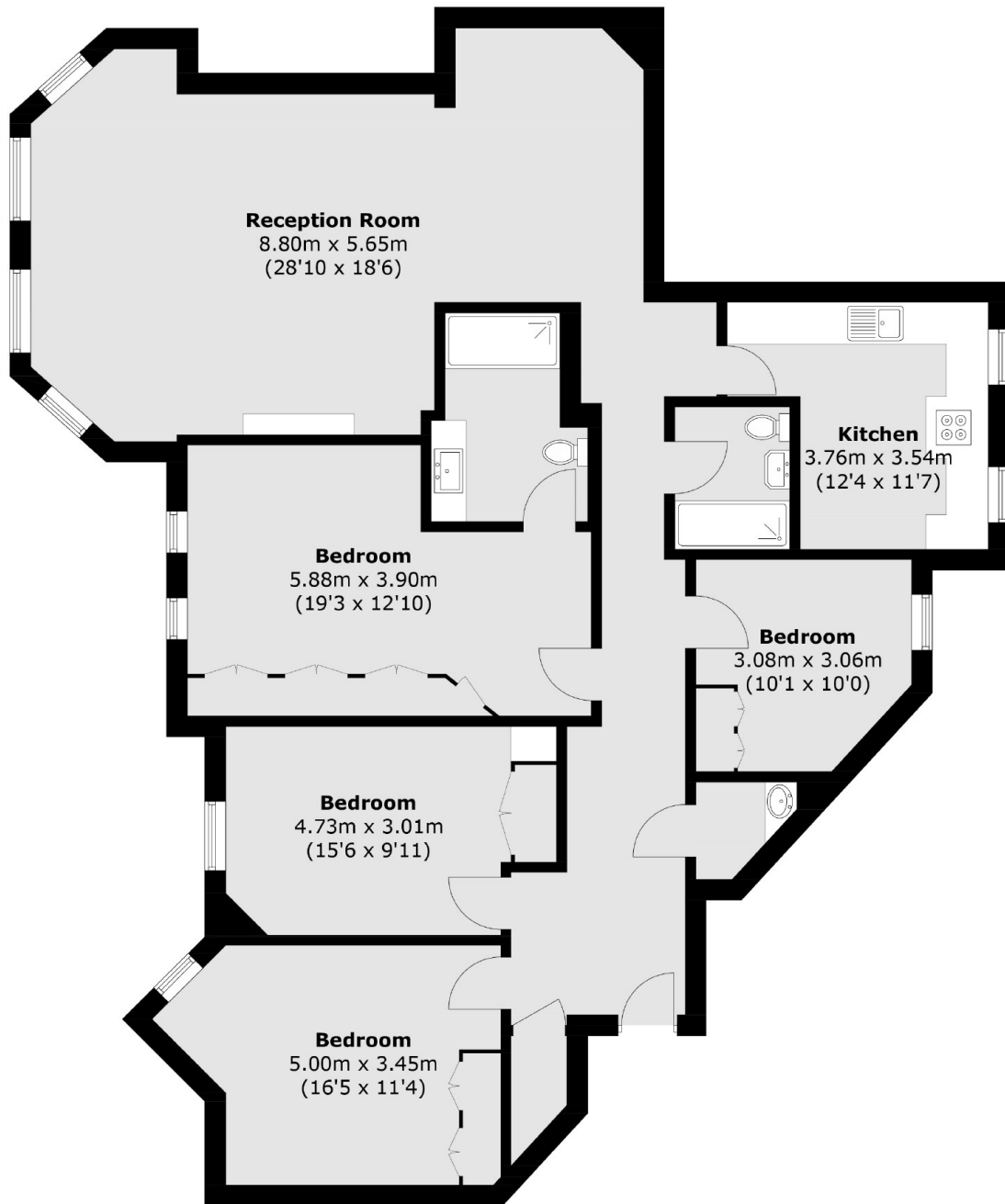
A modern four bedroom, two bathrooms apartment in a 24 hour portered block with communal heating and hot water included in rent. Spacious reception room, dining room, separate kitchen, master bedroom with en suite bathroom, two further bedrooms, family bathroom and guest WC.

St Johns Wood Court is located close to Lords Cricket Ground, Regents Park and within walking distance to shops and restaurants in Little Venice and St Johns Wood.

Features

- Four Double Bedrooms
- Two Bathrooms
- Separate Kitchen
- 24 Hour Portered Block
- Communal Heating and Hot Water
- Wood Floors In Reception Room

St. Johns Wood Road,
London, NW8



Total area (approx.): 144.4 sq. m (1,554.3 sq. ft)