



Abbey Road, NW8

£575 Per week

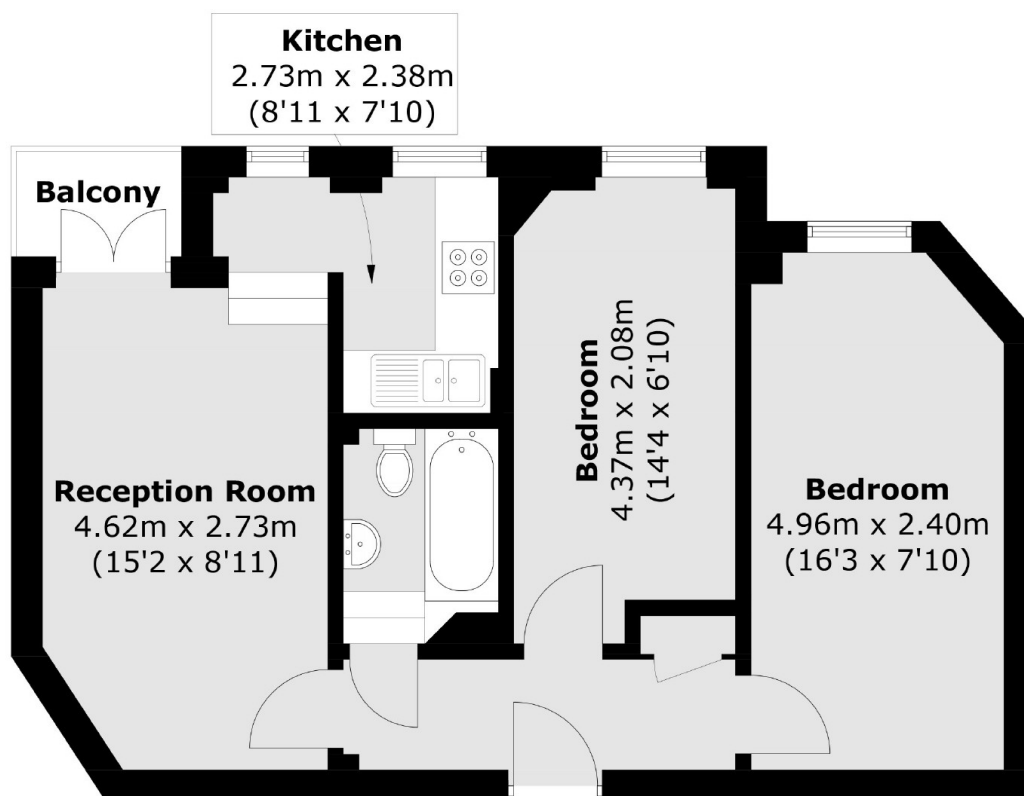
A two double bedroom apartment in a portered block next to Abbey Road Studios. Rent includes communal hot water and residents have access to the communal garden.

Abbey House is located a short distance to St Johns Wood underground station, Lords Cricket Ground and local shops & cafés on St Johns Wood High Street.

Features

- Two Bedrooms
- Day Porter
- Separate Kitchen
- Communal Hot Water Included

Abbey Road,
London, NW8



Total area (approx.): 48.2 sq. m (518.8 sq. ft)
Balcony: 1.6 sq. m (17.2 sq. ft)