



## Scott Ellis Gardens, NW8

£461 Per week

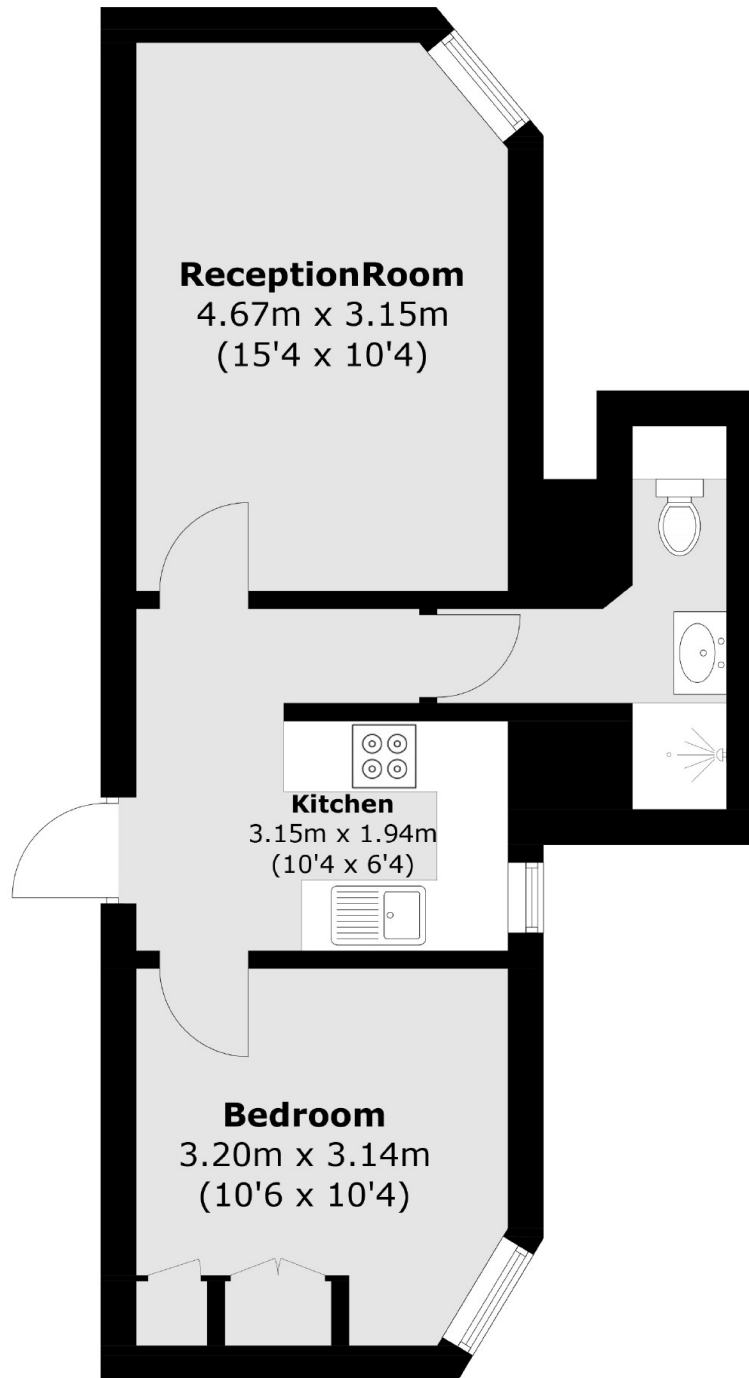
A bright one double bedroom apartment in a purpose built block close to Regents Park. Good size reception room, separate kitchen, double bedroom and shower room. An ideal for a couple or single professional.

Scott Ellis Gardens is located near Lords Cricket Ground and less than a mile from Regents Park and St Johns Wood underground station giving residents quick access into the City and Canary Wharf on the Jubilee Line.

### Features

- One Double Bedroom
- Third Floor Via Lift
- Bright Reception Room
- Purpose Built Block
- Separate Kitchen
- Wood Floors Throughout

Scott Ellis Gardens,  
London, NW8



Total area (approx.): 39.8 sq. m (428.4 sq. ft)