



## Queens Terrace, NW8

£1,450 Per week

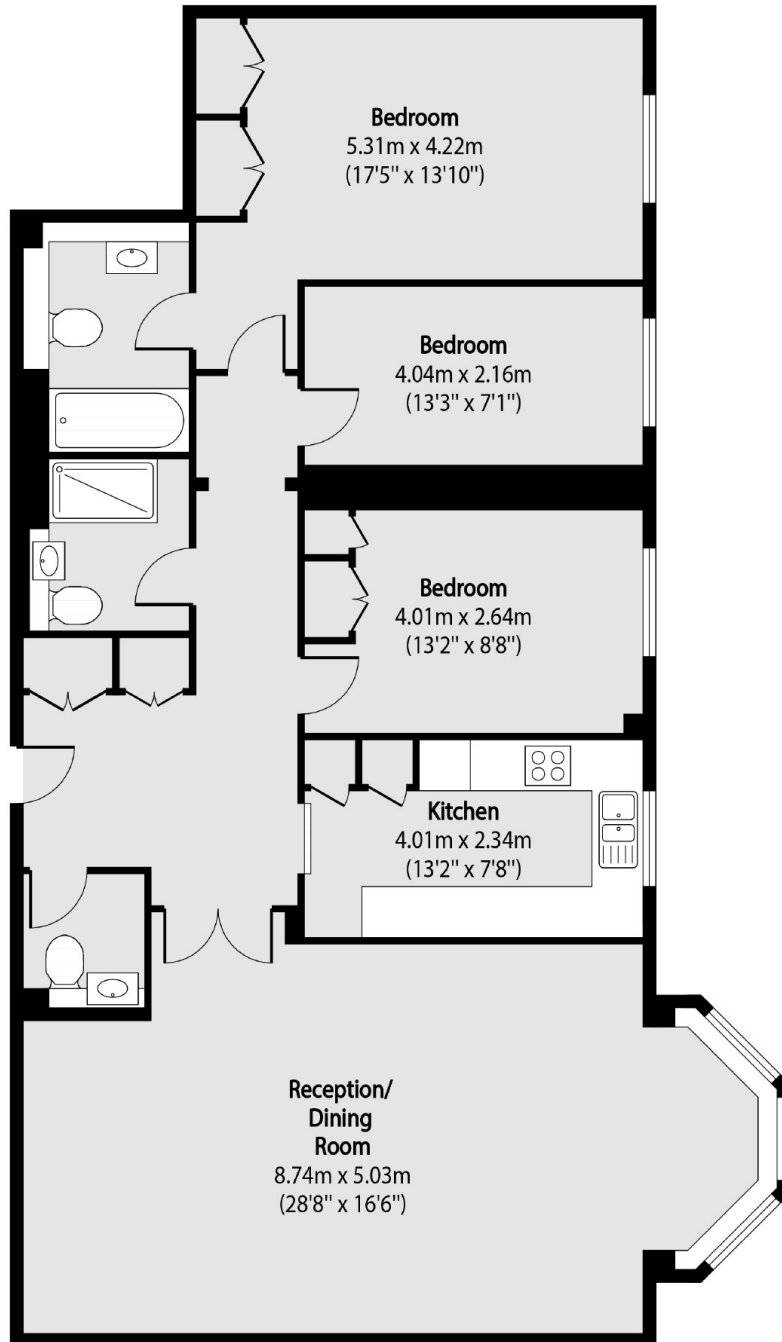
A recently refurbished three double bedroom apartment on the second floor of a portered building. Bright and spacious reception room with bay windows, separate kitchen, master bedroom with built in storage and further two bedrooms. Parking available.

Balmoral Court is located close to St. John's Wood Underground Station and a short distance from St John's Wood High Street and the open green space of Regents Park.

### Features

Three Bedrooms  
Two Bathrooms  
Second Floor  
Portered Building  
Lift  
Parking

Queens Terrace,  
London, NW8



Total area (approx): 113.90 sq m (1226 sq. ft)