

## Marlborough Place, NW8

£692 Per week

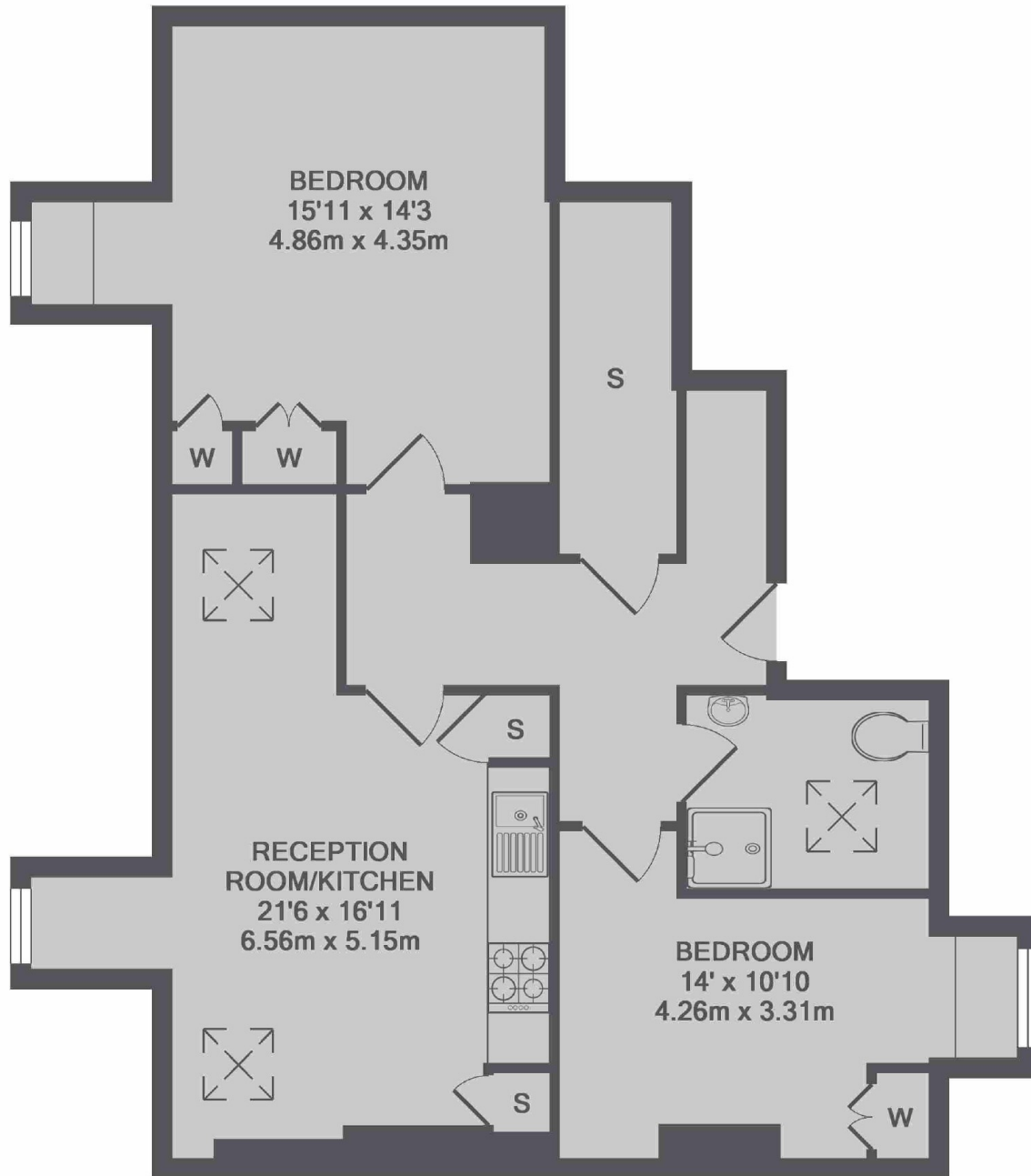
A recently refurbished two double bedroom apartment in a period conversion. Bright reception room with modern open plan kitchen, two good size double bedrooms, modern shower room and good storage throughout.

Marlborough Place is located off of Abbey Road giving residents good access to transport links into the city. Tenants have a choice of local shops, cafés and restaurants on Boundary Road and St Johns Wood High Street.

### Features

Recently Refurbished  
Two Double Bedrooms  
Open Plan Kitchen  
Top Floor Apartment  
Wood Floors In Reception  
St Johns Wood Tube

# Marlborough Place, London, NW8



TOTAL APPROX. FLOOR AREA 777 SQ.FT. (72.2 SQ.M.)