



Eamont Street, NW8

£565 Per week

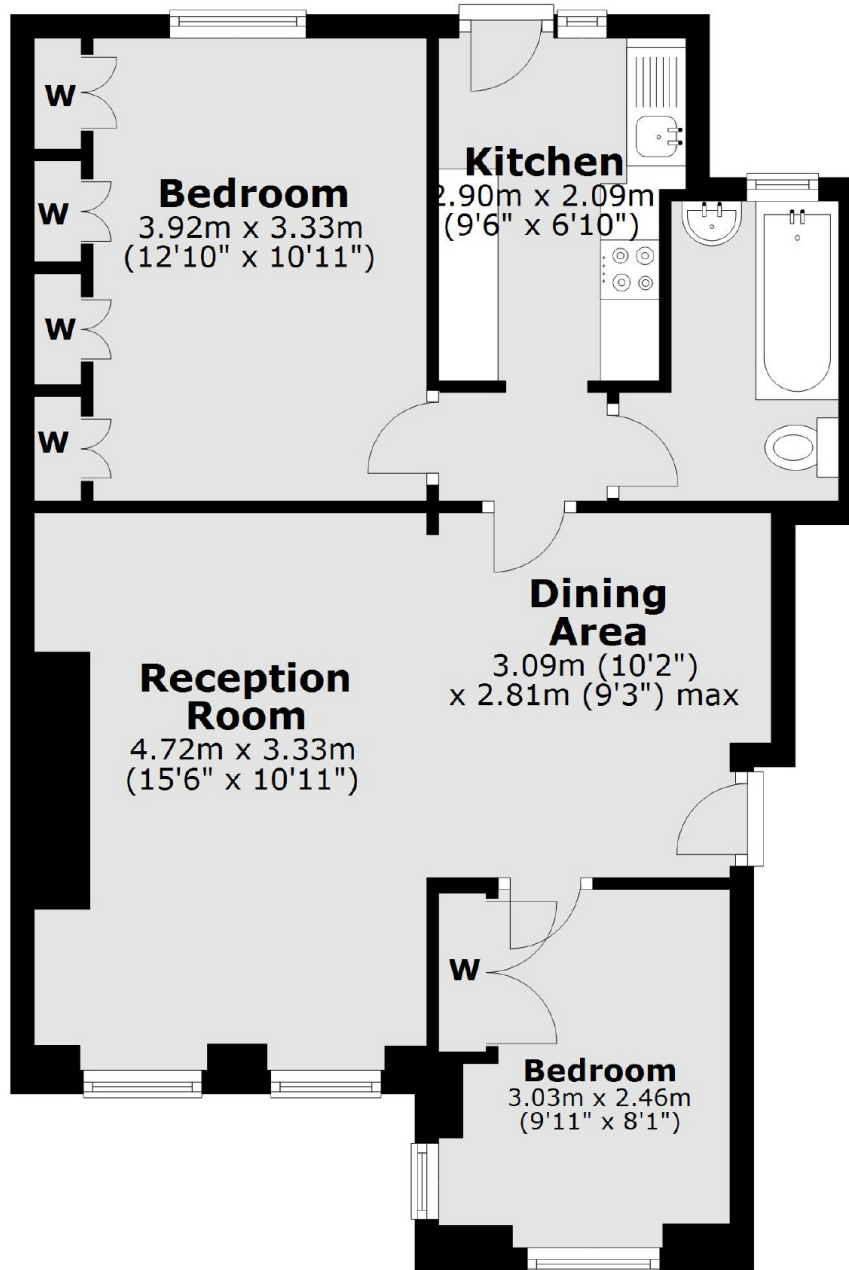
A bright two double bedroom apartment on the second floor of a purpose built block next to Regents Park. Spacious reception room, separate kitchen, large master bedroom with good built in storage, second double bedroom and family bathroom.

Eamont Court is located a short distance to the open green spaces of Regents Park and local shops, cafés and restaurants on St Johns Wood High Street

Features

- Two Double Bedrooms
- Second Floor Apartment
- Separate Kitchen
- Good Storage
- Communal Garden
- Lift

Eamont Street,
London, NW8



Second Floor

Total area: approx. 57.7 sq. metres (621.0 sq. feet)