



Northwick Terrace, NW8

£700,000

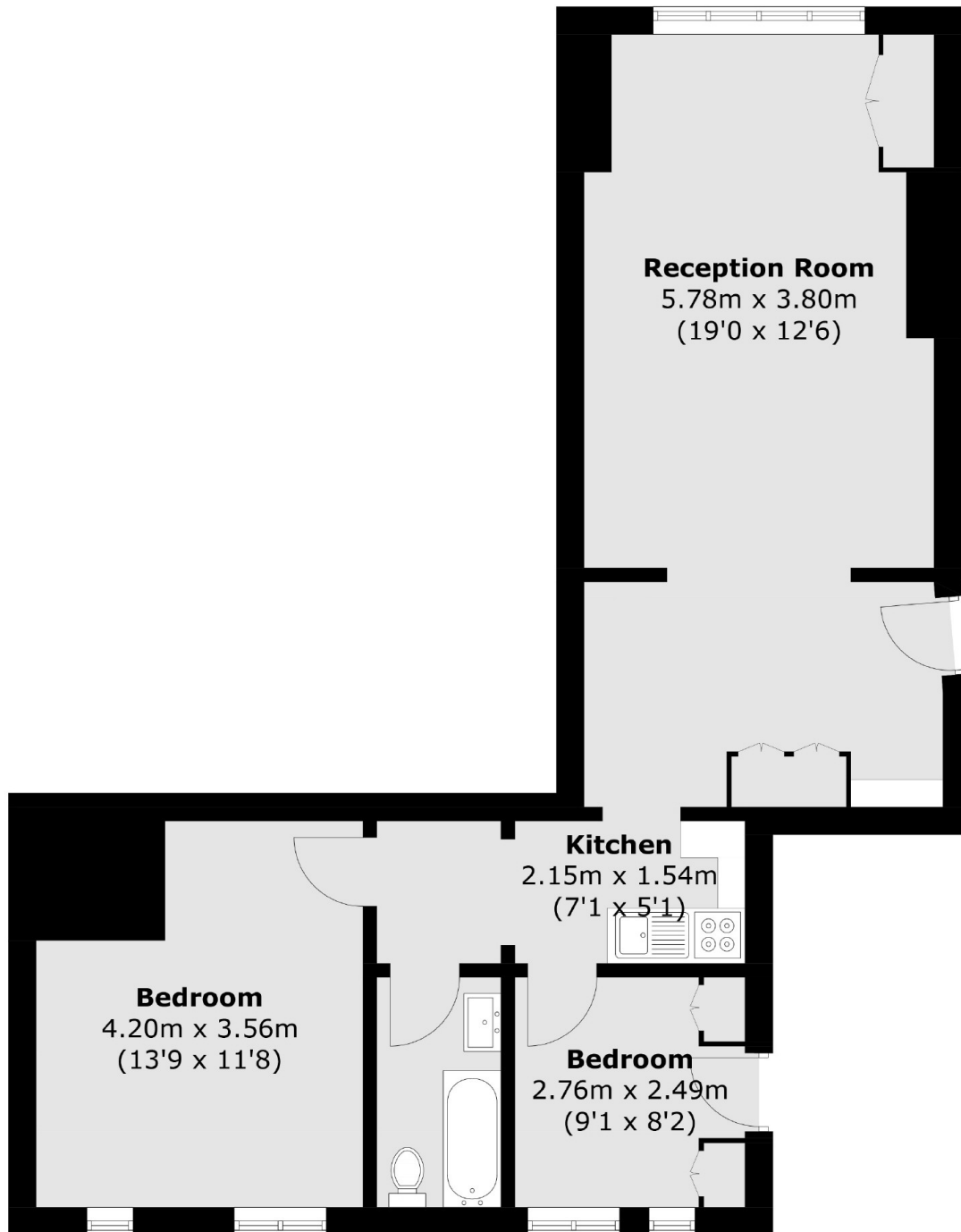
Set within a striking Mock Tudor mansion block is this well-presented two bedroom apartment comprising of a 19ft reception room, contemporary kitchen with breakfast bar and benefitting from direct access access to well maintained communal gardens.

Clifton Court is superbly located between Little Venice, Maida Vale and St. Johns Wood which offer picturesque settings over the canals, Regents Park and Paddington Recreational Grounds.

Features

- Ground Floor
- Two Double Bedrooms
- Wooden Floors
- Communal Gardens
- Share Of Freehold
- No Upper Chain

Northwick Terrace, London, NW8



Total area (approx.): 65.0 sq. m (700.0 sq. ft)