



Lodge Road, NW8

£1,500 Per week

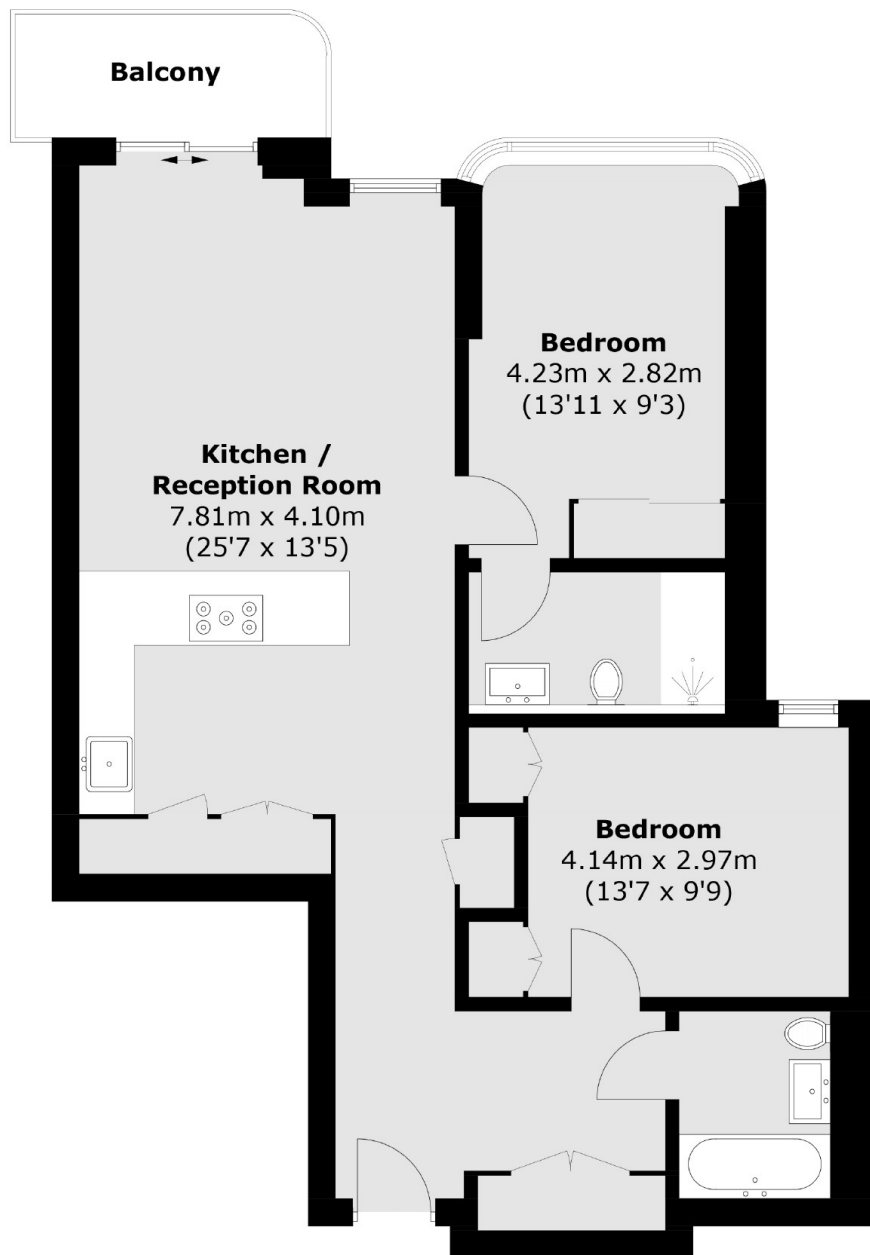
A modern two bedroom, two bathroom apartment in a 24 hour portered building situated on the seventh floor. Spacious reception room, fitted kitchen, master bedroom with en-suite bathroom, followed by a separate second bathroom. The apartment also features a communal rooftop garden and a parking space.

The Compton is a new build block and is ideally located close to the open spaces of Regent's Park and a short distance to St John's Wood High Street and Baker Street.

Features

- Two Bedroom
- Two Bathroom
- Balcony
- Fully Furnished
- 24 Hour Porter
- Parking Space
- Communal Rooftop Garden

Lodge Road,
London, NW8



Seventh Floor

Total area (approx.): 77.9 sq. m (838.5 sq. ft)
Balcony area : 4.5 sq. m (48.4 sq. ft)

Dexters

St. John's Wood
4-6 St Ann's Terrace
London
NW8 6PJ
Lettings
020 7483 6330

Energy Rating: B. We aim to make our particulars both accurate and reliable. However they are not guaranteed; nor do they form part of an offer or contract. If you require clarification on any points then please contact us, especially if you're traveling some distance to view. Please note that appliances and heating systems have not been tested and therefore no warranties can be given as to their good working order.

 **RICS** | Regulated
Estate Agent
and Letting Agent

dexters.co.uk