



Northwick Terrace, NW8

£570,000

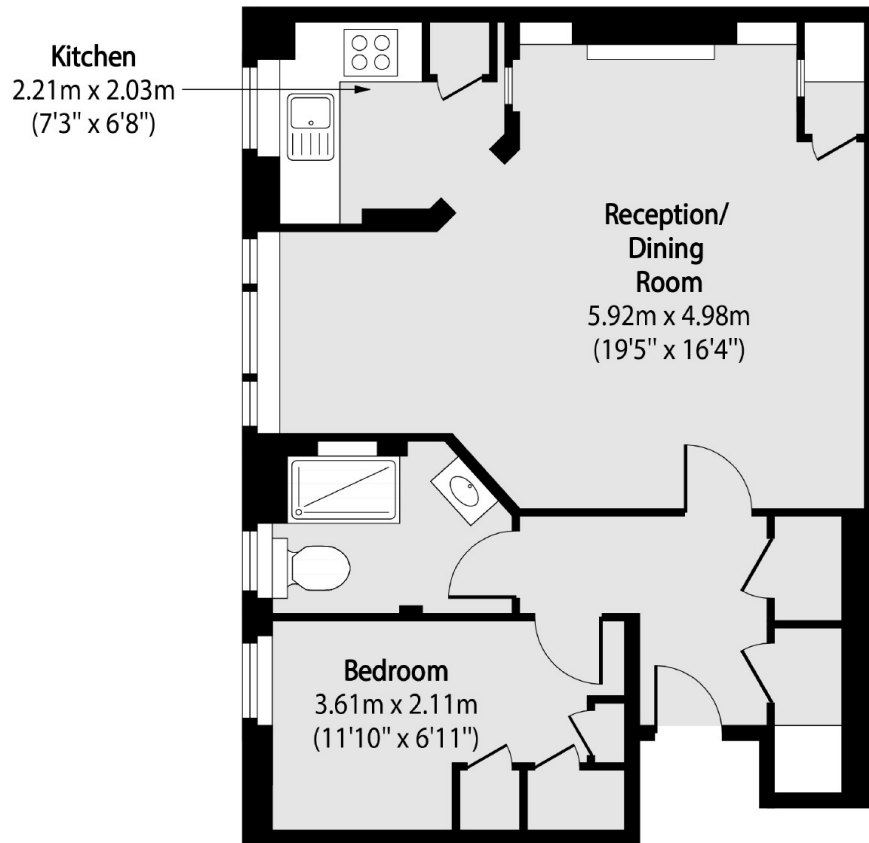
A completely renovated one bedroom flat set on the ground floor within a mansion block. The property includes lift access, porter and well-groomed communal gardens. This is a perfect first time purchase, Pied-à-terre or a rental investment,

Clifton Court is superbly located between St. Johns Wood, Little and Maida Vale which offer picturesque settings over the canals, Regents Park and Paddington Recreational Grounds.

Features

- Ground Floor
- Stunning Communal Gardens
- Portered Block
- Wooden Floors Throughout
- Share Of Freehold
- Hot Water & Heating Included

Northwick Terrace, London, NW8



Total area (approx): 46.36 sq m (499 sq. ft)