



## Boldero Place, NW8

£425,000

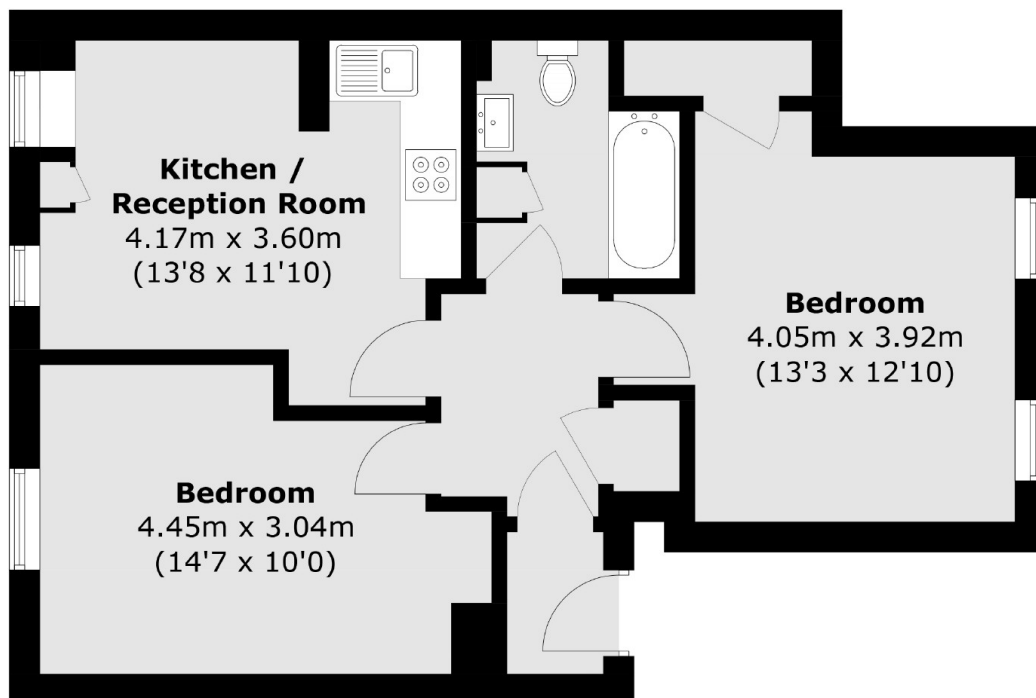
A two double bedroom flat set on the first floor in this purpose built block. This property provides an open-plan kitchen, family bathroom and good built in ample storage. The flat is ideal for a first time buyer or a rental investment. Available chain free.

Gateforth Street is perfectly located 0.4 miles from Marylebone on the Bakerloo Line and short walk to St Johns Wood Jubilee Line. Close to local shops, cafés and restaurants on Church Street.

### Features

- Two Bedrooms
- First Floor Flat
- Chain Free
- Communal Gated Courtyard
- Great Transport Links
- Leasehold

# Boldero Place, London, NW8



Total area (approx.): 51.5 sq. m (554.3 sq. ft)