

Greenberry Street, NW8

£692 Per week

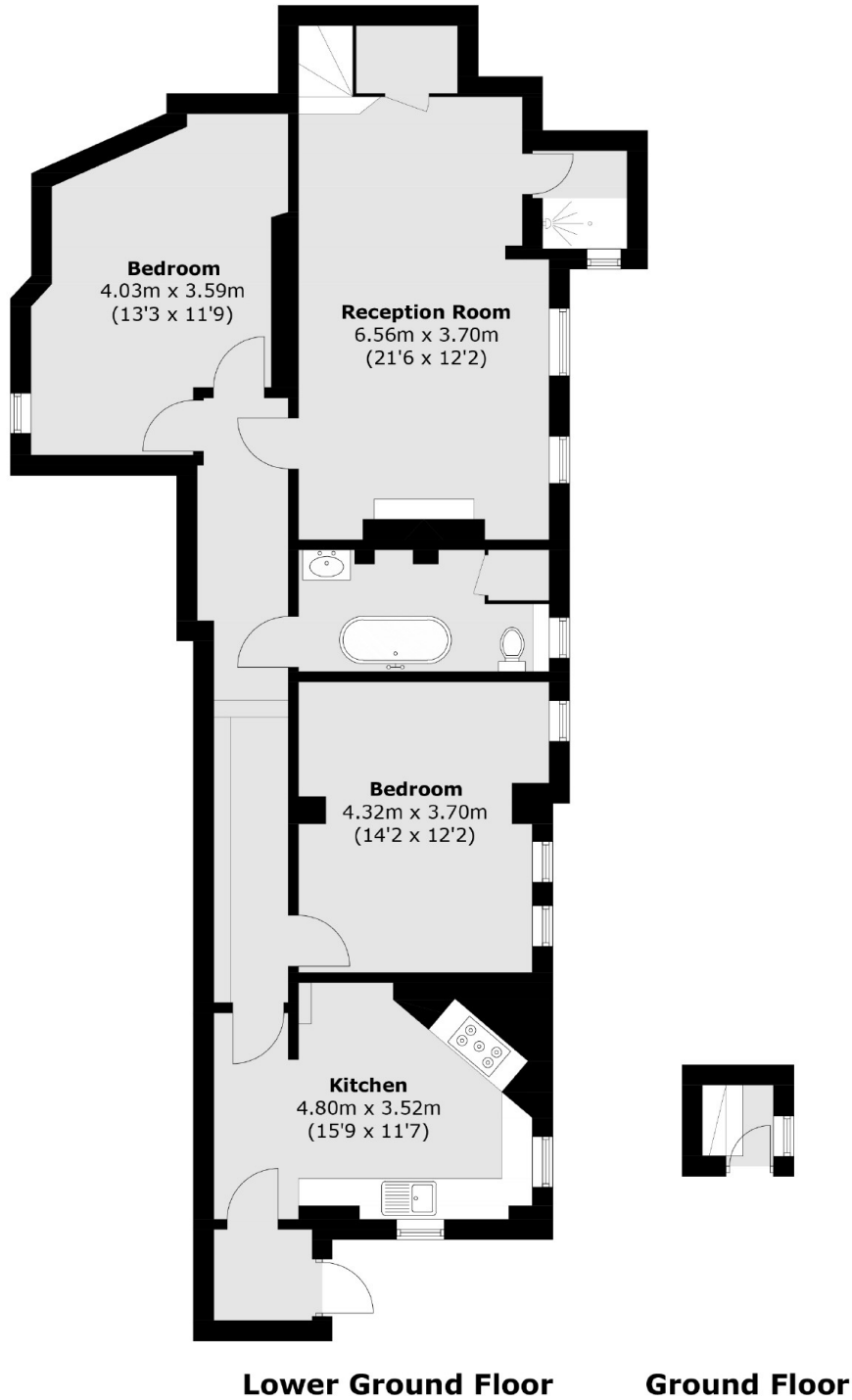
A well presented two double bedroom apartment with separate eat in kitchen in a sought after location just off St John's Wood High Street. Situated on the ground floor of a well maintained mansion block.

Wellington House is ideally located moments from Regent's Park and St Johns Wood High Street with a wide range of cafés, restaurants and shops. The closest underground station is St John's Wood (Jubilee line).

Features

Two Bedrooms
Two Bathrooms
Separate Kitchen
Large Reception
Parquet Flooring
Great Location

Greenberry Street,
London, NW8



Total area (approx.): 99.7 sq. m (1,073.1 sq. ft)