



Grove End Road, NW8

£738 Per week

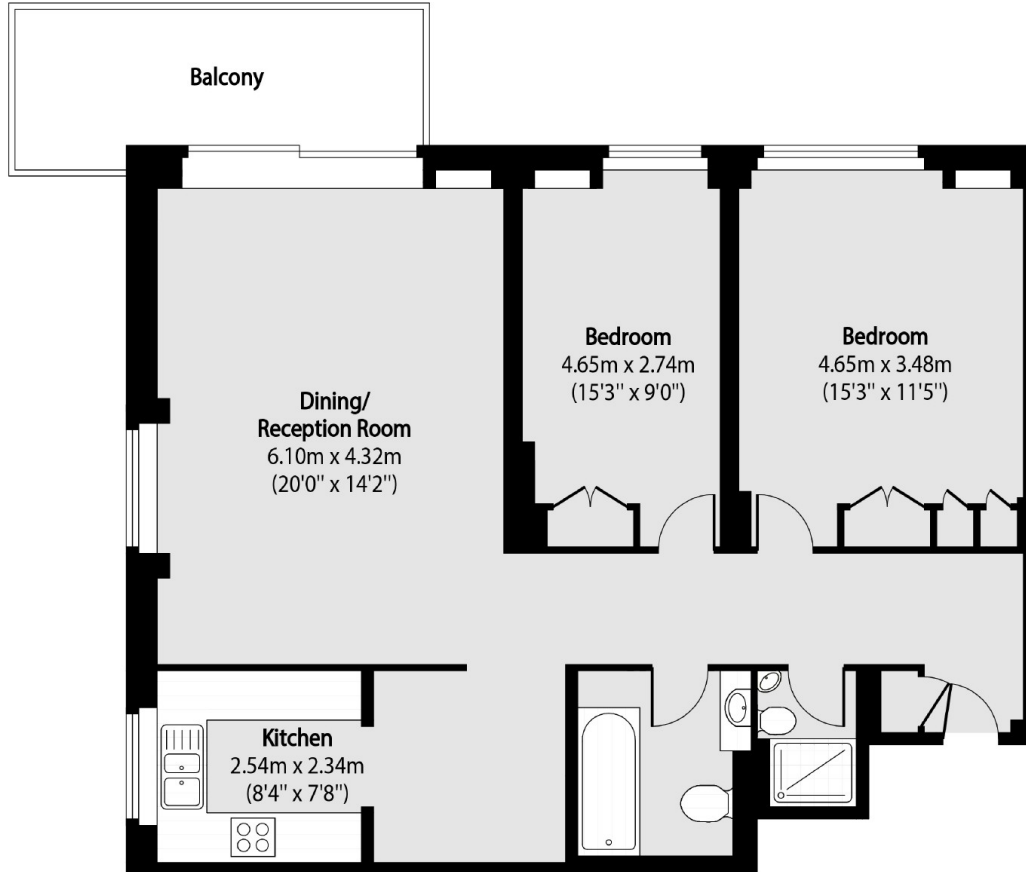
A two double bedroom first floor apartment in a 24 hour portered building. The property benefits from separate kitchen, wood floors and private balcony. Ideal for a couple, small family or professional sharers.

Century Court is located close to Lords View Cricket Ground and Regents Park.

Features

- Two Double Bedrooms
- Two Bathrooms
- First Floor Via Lift
- 24 Hour Porter
- Private Balcony
- Furnished

Grove End Road,
London, NW8



Total area (approx): 95.09 sq m (916 sq. ft)

Balcony total area (approx): 8.82 sq m (95 sq. ft)