



Meadowbank, NW3

£1,500 Per week

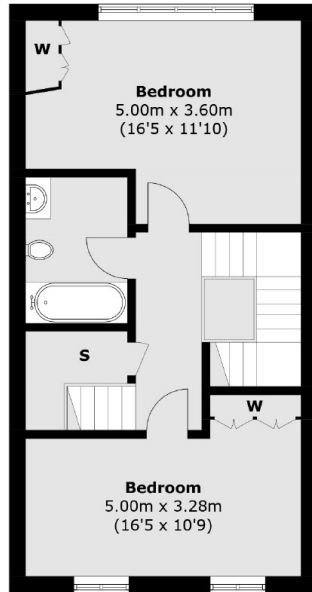
A spacious five bedroom, three bathroom house arranged over four floors next to Primrose Hill with a private rear garden, off street parking, a garage and air conditioning.

Meadowbank is located next to the open spaces of Primrose Hill and close to local shops, restaurants and bars on Regents Park Road.

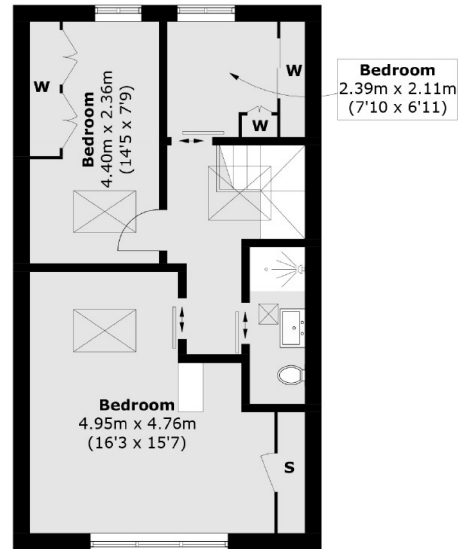
Features

- Five Bedroom House
- Three Bathrooms
- Arranged Over Four Floors
- Rear Garden
- Off Street Parking
- Garage
- Electric Car Charging

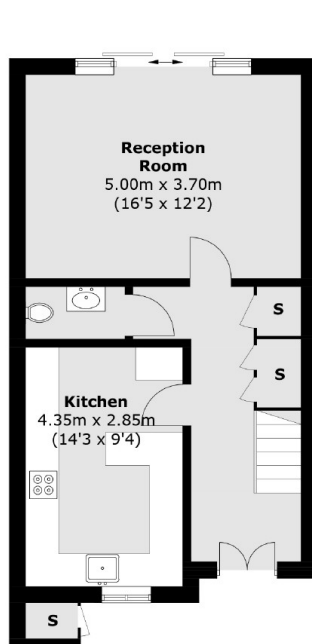
Meadowbank, London, NW3



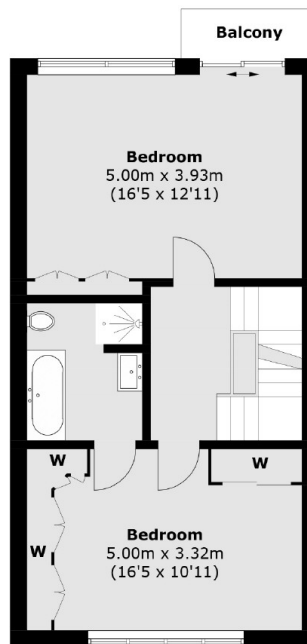
Second Floor



Third Floor



Ground Floor



First Floor

Total area (approx.): 193.7 sq. m (2,084.8 sq. ft)
Store: 0.6 sq. m (6.4 sq. ft)
Balcony: 2.2 sq. m (23.6 sq. ft)